

For Research Use Only

SFXN1 Monoclonal antibody

Catalog Number: 68024-1-Ig



Basic Information

| | | |
|--|--|--|
| Catalog Number: 68024-1-Ig | GenBank Accession Number: BC020517 | Purification Method: Protein G purification |
| Size: 150ul , Concentration: 1000 ug/ml by Nanodrop; | GeneID (NCBI): 94081 | CloneNo.: 2D9F1 |
| Source: Mouse | UNIPROT ID: Q9H9B4 | Recommended Dilutions: WB 1:5000-1:50000 IF/ICC 1:200-1:800 |
| Isotype: IgG1 | Full Name: sideroflexin 1 | |
| Immunogen Catalog Number: AG2985 | Calculated MW: 35.6 kDa | |
| | Observed MW: 32 kDa | |

Applications

| | |
|--|---|
| Tested Applications: WB, IF/ICC, ELISA | Positive Controls: |
| Species Specificity: Human, Rat, Mouse | WB : PC-3 cells, LNCaP cells, MCF-7 cells, HepG2 cells, HeLa cells, Jurkat cells, MOLT-4 cells, Rat brain tissue, Mouse brain tissue |
| | IF/ICC : MCF-7 cells, |

Background Information

SFXN1, the founding member of the SLC56 family, was identified by positional cloning of the mutation in the flexed-tail mouse model with sideroblastic anemia. SFXN1 was recently identified as a mitochondrial serine transporter essential for one-carbon (1C) metabolism, a process in which folate species are generated and used in biosynthetic pathways required for cell proliferation. In HEK293 cells, SFXN1 is the most abundant isoform among the SFXNs.

Storage

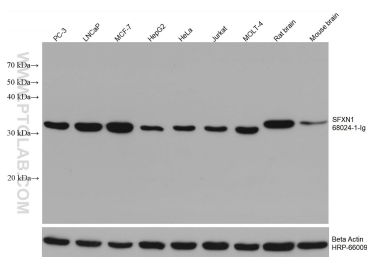
Storage:
Store at -20°C. Stable for one year after shipment.
Storage Buffer:
PBS with 0.02% sodium azide and 50% glycerol pH 7.3.
Aliquoting is unnecessary for -20°C storage

*** 20ul sizes contain 0.1% BSA

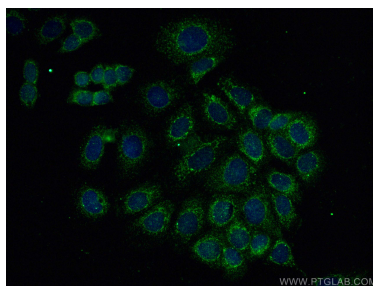
For technical support and original validation data for this product please contact:
T: 1 (888) 4PTGLAB (1-888-478-4522) (toll free in USA), or 1(312) 455-8498 (outside USA)
E: proteintech@ptglab.com
W: ptglab.com

This product is exclusively available under Proteintech Group brand and is not available to purchase from any other manufacturer.

Selected Validation Data



Various lysates were subjected to SDS PAGE followed by western blot with 68024-1-Ig (SFN1 antibody) at dilution of 1:10000 incubated at room temperature for 1.5 hours. The membrane was stripped and reblotted with HRP-conjugated Beta Actin Monoclonal antibody (HRP-66009) as loading control.



Immunofluorescent analysis of (-20°C Methanol) fixed MCF-7 cells using SFN1 antibody (68024-1-Ig, Clone: 2D9F1) at dilution of 1:400 and CoraLite®488-Conjugated AffiniPure Goat Anti-Mouse IgG(H+L).