

For Research Use Only

SFXN1 Monoclonal antibody, PBS Only (Capture)

Catalog Number: 68024-1-PBS



Basic Information

Catalog Number: 68024-1-PBS	GenBank Accession Number: BC020517	Purification Method: Protein G purification
Size: 100ug , Concentration: 1mg/ml by Nanodrop;	GeneID (NCBI): 94081	CloneNo.: 2D9F1
Source: Mouse	UNIPROT ID: Q9H9B4	
Isotype: IgG1	Full Name: sideroflexin 1	
Immunogen Catalog Number: AG2985	Calculated MW: 35.6 kDa	
	Observed MW: 32 kDa	

Applications

Tested Applications:
WB, IF/ICC, Cytometric bead array, Indirect ELISA

Species Specificity:
human, mouse, rat

Product Information

68024-1-PBS targets SFXN1 as part of a matched antibody pair:

MP50630-2: 68024-1-PBS capture and 68024-4-PBS detection (validated in Cytometric bead array)

Unconjugated mouse monoclonal antibody pair in PBS only (BSA and azide free) storage buffer at a concentration of 1 mg/mL, ready for conjugation.

This conjugation ready format makes antibodies ideal for use in many applications including: ELISAs, multiplex assays requiring matched pairs, mass cytometry, and multiplex imaging applications. Antibody use should be optimized by the end user for each application and assay.

Background Information

SFXN1, the founding member of the SLC56 family, was identified by positional cloning of the mutation in the flexed-tail mouse model with sideroblastic anemia. SFXN1 was recently identified as a mitochondrial serine transporter essential for one-carbon (1C) metabolism, a process in which folate species are generated and used in biosynthetic pathways required for cell proliferation. In HEK293 cells, SFXN1 is the most abundant isoform among the SFXNs.

Storage

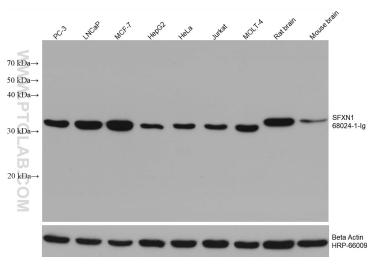
Storage:
Store at -80°C.

Storage Buffer:
PBS Only

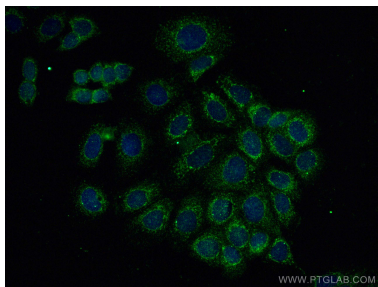
For technical support and original validation data for this product please contact:
T: 1 (888) 4PTGLAB (1-888-478-4522) (toll free in USA), or 1(312) 455-8498 (outside USA)
E: proteintech@ptglab.com
W: ptglab.com

This product is exclusively available under Proteintech Group brand and is not available to purchase from any other manufacturer.

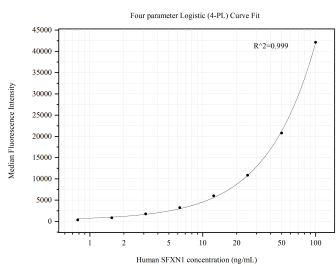
Selected Validation Data



Various lysates were subjected to SDS PAGE followed by western blot with 68024-1-Ig (SFXN1 antibody) at dilution of 1:10000 incubated at room temperature for 1.5 hours. The membrane was stripped and reblotted with HRP-conjugated Beta Actin Monoclonal antibody (HRP-66009) as loading control. This data was developed using the same antibody clone with 68024-1-PBS in a different storage buffer formulation.



Immunofluorescent analysis of (-20°C Methanol) fixed MCF-7 cells using SFXN1 antibody (68024-1-Ig, Clone: 2D9F1) at dilution of 1:400 and CoraLite®488-Conjugated AffiniPure Goat Anti-Mouse IgG(H+L). This data was developed using the same antibody clone with 68024-1-PBS in a different storage buffer formulation.



Cytometric bead array standard curve of MP50630-2, SFXN1 Monoclonal Matched Antibody Pair, PBS Only. Capture antibody: 68024-1-PBS. Detection antibody: 68024-4-PBS. Standard: Ag2985. Range: 0.781-100 ng/mL.