

For Research Use Only

SLC39A3 Monoclonal antibody

Catalog Number: 68025-1-Ig



Basic Information

Catalog Number: 68025-1-Ig	GenBank Accession Number: BC005869	Purification Method: Protein A purification
Size: 150ul, Concentration: 1000 µg/ml by Nanodrop;	GeneID (NCBI): 29985	CloneNo.: 1A11F6
Source: Mouse	Full Name: solute carrier family 39 (zinc transporter), member 3	Recommended Dilutions: WB 1:2000-1:10400
Isotype: IgG2a	Calculated MW: 314 aa, 34 kDa	
Immunogen Catalog Number: AG14289	Observed MW: 32 kDa	

Applications

Tested Applications:
WB, ELISA

Species Specificity:
Human

Positive Controls:

WB: unboiled HepG2 cells, HepG2 cells, 37°C
incubated A549 cells, LNCaP cells, Jurkat cells, K-562
cells, unboiled A549 cells

Background Information

SLC39A3, also named as ZIP3, belongs to the ZIP transporter (TC 2.A.5) family. SLC39A3 is a Zn importer that acts as a zinc-influx transporter. SLC39A3 is highly expressed in a cell-type-specific manner in ovaries, testes, and the developing nervous system with limited expression in the small intestinal crypt cells, kidney glomerulus, and discrete regions of the liver. SLC39A3 is also expressed in highly specialized, hormonally responsive secretory tissues, such as the pancreas, prostate, and mammary gland (PMID: 19458277). SLC39A3 has 2 isoforms with the molecular mass of 11 and 34 kDa.

Storage

Storage:
Store at -20°C. Stable for one year after shipment.

Storage Buffer:
PBS with 0.02% sodium azide and 50% glycerol pH 7.3.

Aliquoting is unnecessary for -20°C storage

*** 20ul sizes contain 0.1% BSA

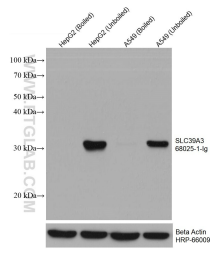
For technical support and original validation data for this product please contact:

T: 1 (888) 4PTGLAB (1-888-478-4522) (toll free
in USA), or 1(312) 455-8498 (outside USA)

E: proteintech@ptglab.com
W: ptglab.com

This product is exclusively available under Proteintech Group brand and is not available to purchase from any other manufacturer.

Selected Validation Data



Various lysates were subjected to SDS PAGE followed by western blot with 68025-1-g (SLC39A3 antibody) at dilution of 1:5200 incubated at room temperature for 1.5 hours. The membrane was stripped and reblotted with HRP-conjugated Beta Actin Monoclonal antibody (HRP-66009) as loading control.