

For Research Use Only

# CISD1 Monoclonal antibody

Catalog Number: 68030-1-Ig



## Basic Information

Catalog Number:	68030-1-Ig	GenBank Accession Number:	BC007043	Purification Method:	Protein G purification
Size:	150ul , Concentration: 1000 ug/ml by Nanodrop;	GeneID (NCBI):	55847	CloneNo.:	1D7E3
Source:	Mouse	UNIPROT ID:	Q9NZ45	Recommended Dilutions:	WB 1:5000-1:50000
Isotype:	IgG1	Full Name:	CDGSH iron sulfur domain 1	IHC 1:1000-1:4000	IF/ICC 1:200-1:800
Immunogen Catalog Number:	AG8560	Calculated MW:	108 aa, 12 kDa		
		Observed MW:	14-17 kDa		

## Applications

**Tested Applications:**  
WB, IHC, IF/ICC, ELISA

**Species Specificity:**  
human, mouse, rat, pig, rabbit, chicken

**Note-IHC: suggested antigen retrieval with TE buffer pH 9.0; (\*) Alternatively, antigen retrieval may be performed with citrate buffer pH 6.0**

**Positive Controls:**

**WB :** LNCaP cells, HeLa cells, HEK-293 cells, pig brain tissue, rabbit brain tissue, rat brain tissue, mouse brain tissue, chicken brain tissue, mouse cerebellum tissue

**IHC :** human pancreas cancer tissue,

**IF/ICC :** H9C2 cells,

## Background Information

MitoNEET, also named CISD1, belongs to a previously uncharacterized ancient family of proteins for which the hallmark is the presence of a unique 39 amino acid CDGSH domain. It is a single-pass type III membrane protein, located in mitochondrion outer membrane and may play a role in regulating maximal capacity for electron transport and oxidative phosphorylation. MitoNEET is a recently identified drug target for a commonly prescribed diabetes drug, Pioglitazone. This antibody recognizing MitoNEET (calculated 12 kDa) as a 17 kDa protein may be due to its posttranslational modification or metal binding activity.

## Storage

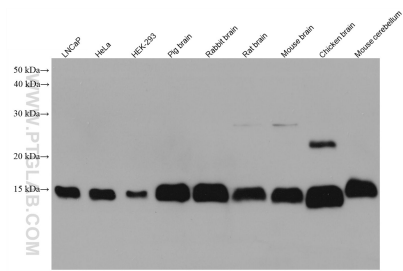
**Storage:**  
Store at -20°C. Stable for one year after shipment.  
**Storage Buffer:**  
PBS with 0.02% sodium azide and 50% glycerol pH 7.3.  
Aliquoting is unnecessary for -20°C storage

\*\*\* 20ul sizes contain 0.1% BSA

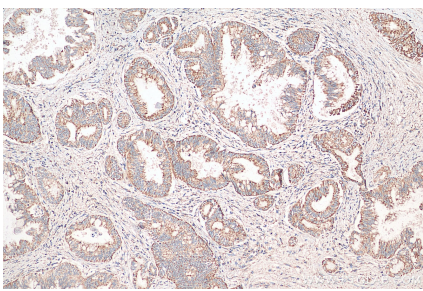
For technical support and original validation data for this product please contact:  
T: 1 (888) 4PTGLAB (1-888-478-4522) (toll free in USA), or 1(312) 455-8498 (outside USA)  
E: proteintech@ptglab.com  
W: ptglab.com

This product is exclusively available under Proteintech Group brand and is not available to purchase from any other manufacturer.

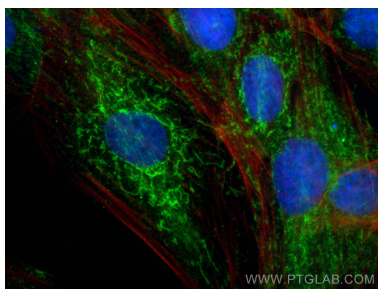
## Selected Validation Data



Various lysates were subjected to SDS PAGE followed by western blot with 68030-1-Ig (CISD1 antibody) at dilution of 1:20000 incubated at room temperature for 1.5 hours.



Immunohistochemical analysis of paraffin-embedded human pancreas cancer tissue slide using 68030-1-Ig (CISD1 antibody) at dilution of 1:2000 (under 10x lens). Heat mediated antigen retrieval with Tris-EDTA buffer (pH 9.0).



Immunofluorescent analysis of (4% PFA) fixed H9C2 cells using CISD1 antibody (68030-1-Ig, Clone: 1D7E3 ) at dilution of 1:400 and CoraLite®488-Conjugated AffiniPure Goat Anti-Mouse IgG(H+L) (SA00013-1), CL594-phalloidin (red).