

For Research Use Only

CISD1 Monoclonal antibody

Catalog Number: 68030-1-Ig



Basic Information

Catalog Number:	68030-1-Ig	GenBank Accession Number:	BC007043	Purification Method:	Protein G purification
Size:	150ul , Concentration: 1000 ug/ml by Nanodrop;	GeneID (NCBI):	55847	CloneNo.:	1D7E3
Source:	Mouse	UNIPROT ID:	Q9NZ45	Recommended Dilutions:	
Isotype:	IgG1	Full Name:	CDGSH iron sulfur domain 1	WB: 1:5000-1:50000	IHC: 1:1000-1:4000
Immunogen Catalog Number:	AG8560	Calculated MW:	108 aa, 12 kDa	IF/ICC: 1:200-1:800	
		Observed MW:	14-17 kDa		

Applications

Tested Applications:
WB, IHC, IF/ICC, ELISA

Species Specificity:
human, mouse, rat, pig, rabbit, chicken

Note-IHC: suggested antigen retrieval with TE buffer pH 9.0; (*) Alternatively, antigen retrieval may be performed with citrate buffer pH 6.0

Positive Controls:

WB : LNCaP cells, HeLa cells, HEK-293 cells, pig brain tissue, rabbit brain tissue, rat brain tissue, mouse brain tissue, chicken brain tissue, mouse cerebellum tissue

IHC : human pancreas cancer tissue,

IF/ICC : H9C2 cells,

Background Information

MitoNEET, also named CISD1, belongs to a previously uncharacterized ancient family of proteins for which the hallmark is the presence of a unique 39 amino acid CDGSH domain. It is a single-pass type III membrane protein, located in mitochondrion outer membrane and may play a role in regulating maximal capacity for electron transport and oxidative phosphorylation. MitoNEET is a recently identified drug target for a commonly prescribed diabetes drug, Pioglitazone. This antibody recognizing MitoNEET (calculated 12 kDa) as a 17 kDa protein may be due to its posttranslational modification or metal binding activity.

Storage

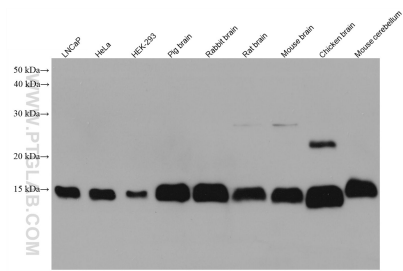
Storage:
Store at -20°C. Stable for one year after shipment.
Storage Buffer:
PBS with 0.02% sodium azide and 50% glycerol, pH7.3
Aliquoting is unnecessary for -20°C storage

***** 20ul sizes contain 0.1% BSA**

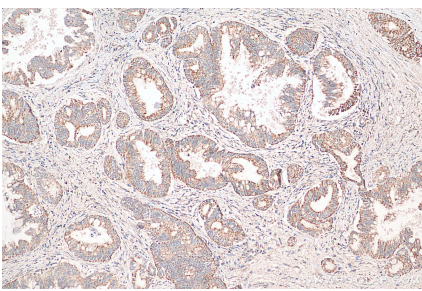
For technical support and original validation data for this product please contact:
T: 1 (888) 4PTGLAB (1-888-478-4522) (toll free in USA), or 1(312) 455-8498 (outside USA)
E: proteintech@ptglab.com
W: ptglab.com

This product is exclusively available under Proteintech Group brand and is not available to purchase from any other manufacturer.

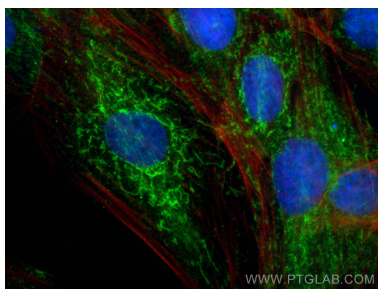
Selected Validation Data



Various lysates were subjected to SDS PAGE followed by western blot with 68030-1-Ig (Cisd1 antibody) at dilution of 1:20000 incubated at room temperature for 1.5 hours.



Immunohistochemical analysis of paraffin-embedded human pancreas cancer tissue slide using 68030-1-Ig (Cisd1 antibody) at dilution of 1:2000 (under 10x lens). Heat mediated antigen retrieval with Tris-EDTA buffer (pH 9.0).



Immunofluorescent analysis of (4% PFA) fixed H9C2 cells using Cisd1 antibody (68030-1-Ig, Clone: 1D7E3) at dilution of 1:400 and CoraLite®488-Conjugated AffiniPure Goat Anti-Mouse IgG(H+L) (SA00013-1), CL594-phalloidin (red).