

For Research Use Only

CISD1 Monoclonal antibody, PBS Only



Catalog Number: 68030-1-PBS

Basic Information

Catalog Number: 68030-1-PBS	GenBank Accession Number: BC007043	Purification Method: Protein G purification
Size: 100ug , Concentration: 1mg/ml by Nanodrop;	GeneID (NCBI): 55847	CloneNo.: 1D7E3
Source: Mouse	UNIPROT ID: Q9NZ45	
Isotype: IgG1	Full Name: CDGSH iron sulfur domain 1	
Immunogen Catalog Number: AG8560	Calculated MW: 108 aa, 12 kDa	
	Observed MW: 14-17 kDa	

Applications

Tested Applications:
WB, IF, IHC, Indirect ELISA

Species Specificity:
Human, mouse, rat, chicken, rabbit, pig

Background Information

MitoNEET, also named CISD1, belongs to a previously uncharacterized ancient family of proteins for which the hallmark is the presence of a unique 39 amino acid CDGSH domain. It is a single-pass type III membrane protein, located in mitochondrion outer membrane and may play a role in regulating maximal capacity for electron transport and oxidative phosphorylation. MitoNEET is a recently identified drug target for a commonly prescribed diabetes drug, Pioglitazone. This antibody recognizing MitoNEET (calculated 12 kDa) as a 17 kDa protein may be due to its posttranslational modification or metal binding activity.

Storage

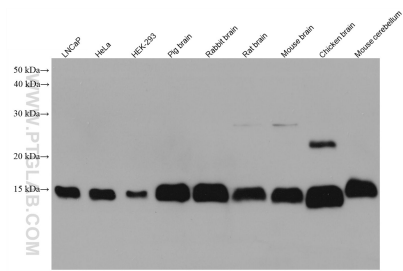
Storage:
Store at -80°C.

Storage Buffer:
PBS Only

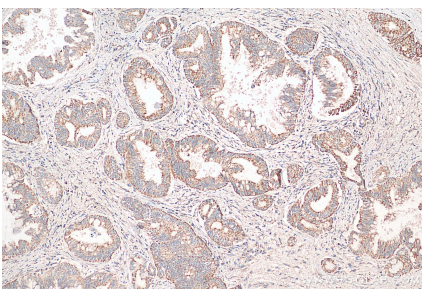
For technical support and original validation data for this product please contact:
T: 1 (888) 4PTGLAB (1-888-478-4522) (toll free in USA), or 1(312) 455-8498 (outside USA)
E: proteintech@ptglab.com
W: ptglab.com

This product is exclusively available under Proteintech Group brand and is not available to purchase from any other manufacturer.

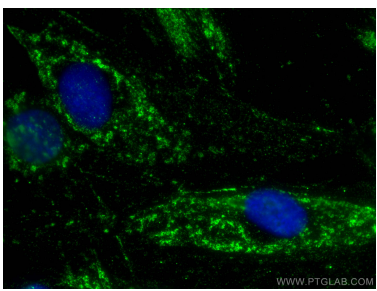
Selected Validation Data



Various lysates were subjected to SDS PAGE followed by western blot with 68030-1-Ig (CISD1 antibody) at dilution of 1:20000 incubated at room temperature for 1.5 hours. This data was developed using the same antibody clone with 68030-1-PBS in a different storage buffer formulation.



Immunohistochemical analysis of paraffin-embedded human pancreas cancer tissue slide using 68030-1-Ig (CISD1 antibody) at dilution of 1:2000 (under 10x lens). Heat mediated antigen retrieval with Tris-EDTA buffer (pH 9.0). This data was developed using the same antibody clone with 68030-1-PBS in a different storage buffer formulation.



Immunofluorescent analysis of (-20°C Methanol) fixed H9C2 cells using CISD1 antibody (68030-1-Ig, Clone: 1D7E3) at dilution of 1:400 and CoraLite®488-Conjugated AffiniPure Goat Anti-Mouse IgG(H+L). This data was developed using the same antibody clone with 68030-1-PBS in a different storage buffer formulation.