

For Research Use Only

DUSP22 Monoclonal antibody

Catalog Number: 68032-1-Ig



Basic Information

Catalog Number: 68032-1-Ig	GenBank Accession Number: BC022847	Purification Method: Protein A purification
Size: 150ul , Concentration: 1000 ug/ml by Nanodrop;	GeneID (NCBI): 56940	CloneNo.: 3B8F1
Source: Mouse	UNIPROT ID: Q9NRW4	Recommended Dilutions: WB 1:2000-1:10000 IF/ICC 1:400-1:1600
Isotype: IgG2a	Full Name: dual specificity phosphatase 22	
Immunogen Catalog Number: AG9831	Calculated MW: 184 aa, 21 kDa	
	Observed MW: 21 kDa	

Applications

Tested Applications: WB, IF/ICC, ELISA	Positive Controls:
Species Specificity: Human, Mouse, Rat, Rabbit	WB : rat brain tissue, rabbit brain tissue, mouse brain tissue
	IF/ICC : NIH/3T3 cells,

Background Information

DUSP22(Dual specificity protein phosphatase 22) is also named as JSP1, LMWDSP2, MKPX. It has been demonstrated to belong to a new subgroup of small DSPs anchored at the membranes by an N-terminal myristic acid moiety and DUSP22 play a regulatory role in the JNK or p38 MAPK pathways(PMID:17384676). It has 2 isoforms produced by alternative splicing with the molecular weight of 21 kDa and 23 kDa.

Storage

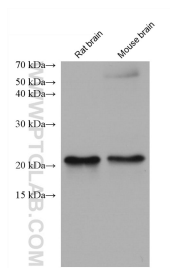
Storage:
Store at -20°C.
Storage Buffer:
PBS with 0.02% sodium azide and 50% glycerol pH 7.3.
Aliquoting is unnecessary for -20°C storage

*** 20ul sizes contain 0.1% BSA

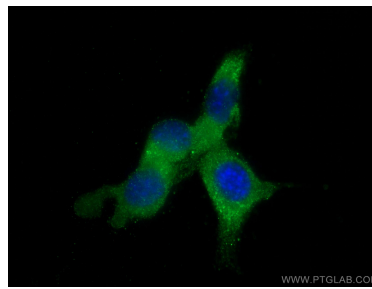
For technical support and original validation data for this product please contact:
T: 1 (888) 4PTGLAB (1-888-478-4522) (toll free in USA), or 1(312) 455-8498 (outside USA)
E: proteintech@ptglab.com
W: ptglab.com

This product is exclusively available under Proteintech Group brand and is not available to purchase from any other manufacturer.

Selected Validation Data



Various lysates were subjected to SDS PAGE followed by western blot with 68032-1-Ig (DUSP22 antibody) at dilution of 1:5000 incubated at room temperature for 1.5 hours.



Immunofluorescent analysis of (-20°C Methanol) fixed NIH/3T3 cells using DUSP22 antibody (68032-1-Ig, Clone: 3B8F1) at dilution of 1:800 and CoraLite®488-Conjugated Goat Anti-Mouse IgG(H+L).