

For Research Use Only

ZFP36L1 Monoclonal antibody

Catalog Number: 68038-1-Ig



Basic Information

Catalog Number: 68038-1-Ig	GenBank Accession Number: BC018340	Purification Method: Protein A purification
Size: 150ul , Concentration: 1000 ug/ml by Nanodrop;	GeneID (NCBI): 677	CloneNo.: 1H6G6
Source: Mouse	UNIPROT ID: Q07352	Recommended Dilutions: WB 1:1000-1:6000 IF/ICC 1:200-1:800
Isotype: IgG2b	Full Name: zinc finger protein 36, C3H type-like 1	
Immunogen Catalog Number: AG30469	Calculated MW: 338 aa, 36 kDa	
	Observed MW: 36 kDa	

Applications

Tested Applications: WB, IF/ICC, ELISA	Positive Controls:
Species Specificity: Human, Rat	WB : HUVEC cells, HSC-T6 cells, PC-12 cells, U2OS cells, A549 cells, HeLa cells
	IF/ICC : HepG2 cells,

Background Information

As a member of the Tristetraprolin (TTP) RNA binding protein family, ZFP36L1 regulate gene expression post-transcriptionally by promoting mRNA decay. In mammals, ZFP36L1 and its family members have been shown to regulate development, cell differentiation, cell cycle, apoptosis and anti-cancer capability by targeting an extensive overlapping repertoire of mRNAs.

Storage

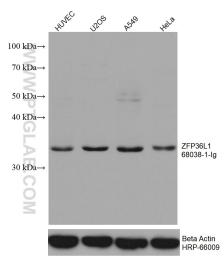
Storage:
Store at -20°C. Stable for one year after shipment.
Storage Buffer:
PBS with 0.02% sodium azide and 50% glycerol pH 7.3.
Aliquoting is unnecessary for -20°C storage

*** 20ul sizes contain 0.1% BSA

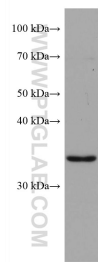
For technical support and original validation data for this product please contact:
T: 1 (888) 4PTGLAB (1-888-478-4522) (toll free in USA), or 1(312) 455-8498 (outside USA)
E: proteintech@ptglab.com
W: ptglab.com

This product is exclusively available under Proteintech Group brand and is not available to purchase from any other manufacturer.

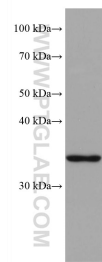
Selected Validation Data



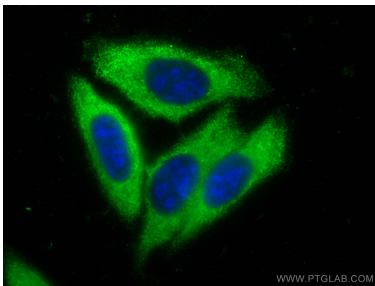
Various lysates were subjected to SDS PAGE followed by western blot with 68038-1-Ig (ZFP36L1 antibody) at dilution of 1:3000 incubated at room temperature for 1.5 hours. The membrane was stripped and reblotted with HRP-conjugated Beta Actin Monoclonal antibody (HRP-66009) as loading control.



HSC-T6 cells were subjected to SDS PAGE followed by western blot with 68038-1-Ig (ZFP36L1 antibody) at dilution of 1:3000 incubated at room temperature for 1.5 hours.



PC-12 cells were subjected to SDS PAGE followed by western blot with 68038-1-Ig (ZFP36L1 antibody) at dilution of 1:3000 incubated at room temperature for 1.5 hours.



Immunofluorescent analysis of (-20°C Ethanol) fixed HepG2 cells using ZFP36L1 antibody (68038-1-Ig, Clone: 1H6G6) at dilution of 1:400 and CoraLite®488-Conjugated Goat Anti-Mouse IgG(H+L).