

For Research Use Only

SMS Monoclonal antibody

Catalog Number: 68040-1-Ig **Featured Product**



Basic Information

Catalog Number:

68040-1-Ig

Size:

150ul , Concentration: 1000 ug/ml by 6611

Nanodrop;

Source:

Mouse

Isotype:

IgG1

Immunogen Catalog Number:

AG8840

GenBank Accession Number:

BC009898

GeneID (NCBI):

6611

UNIPROT ID:

P52788

Full Name:

spermine synthase

Calculated MW:

366 aa, 41 kDa

Observed MW:

41 kDa

Purification Method:

Protein A purification

CloneNo.:

1G8E9

Recommended Dilutions:

WB 1:5000-1:50000

IF/ICC 1:400-1:1600

Applications

Tested Applications:

WB, IF/ICC, FC (Intra), ELISA

Species Specificity:

human

Positive Controls:

WB : A431 cells, K-562 cells, HCT 116 cells, HEK-293 cells, Hela cells, HepG2 cells, Jurkat cells

IF/ICC : HeLa cells,

Storage

Storage:

Store at -20°C. Stable for one year after shipment.

Storage Buffer:

PBS with 0.02% sodium azide and 50% glycerol pH 7.3.

Aliquoting is unnecessary for -20°C storage

*** 20ul sizes contain 0.1% BSA

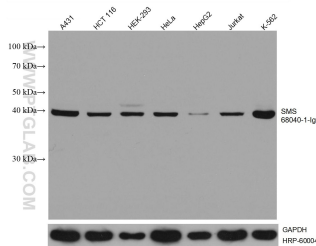
For technical support and original validation data for this product please contact:

T: 1 (888) 4PTGLAB (1-888-478-4522) (toll free in USA), or 1(312) 455-8498 (outside USA)

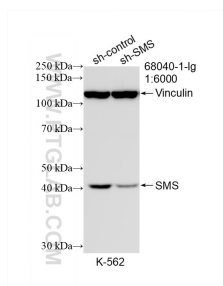
E: proteintech@ptglab.com
W: ptglab.com

This product is exclusively available under Proteintech Group brand and is not available to purchase from any other manufacturer.

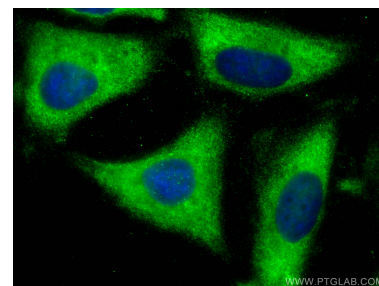
Selected Validation Data



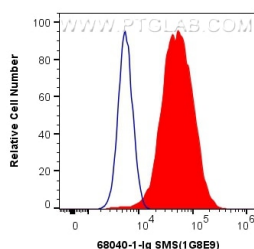
A431 cells were subjected to SDS PAGE followed by western blot with 68040-1-Ig (SMS antibody) at dilution of 1:10000 incubated at room temperature for 1.5 hours. The membrane was stripped and reblotted with HRP-conjugated GAPDH Monoclonal antibody (HRP-60004) as loading control.



WB result of SMS antibody (68040-1-Ig; 1:6000; incubated at room temperature for 1.5 hours) with sh-Control and sh-SMS transfected K-562 cells.



Immunofluorescent analysis of (-20°C Ethanol) fixed HeLa cells using SMS antibody (68040-1-Ig, Clone: 1G8E9) at dilution of 1:800 and CoraLite®488-Conjugated AffiniPure Goat Anti-Mouse IgG(H+L).



1X10⁶ HeLa cells were intracellularly stained with 0.4 ug Anti-Human SMS (68040-1-Ig, Clone:1G8E9) and CoraLite®488-Conjugated AffiniPure Goat Anti-Mouse IgG(H+L) at dilution 1:1000 (red), or 0.4 ug Mouse IgG1 Isotype Control (MOPC-21) (65124-1-Ig, Clone: MOPC-21) (blue). Cells were fixed with 4% PFA and permeabilized with Flow Cytometry Perm Buffer (PF00011-C).