

For Research Use Only

Phospho-RPS6KA1 (Thr359/Ser363) Monoclonal antibody

Catalog Number: 68041-1-Ig



Basic Information

Catalog Number: 68041-1-Ig	GenBank Accession Number: BC014966	Purification Method: Protein G purification
Size: 100ul , Concentration: 1000 ug/ml by Nanodrop;	GeneID (NCBI): 6195	CloneNo.: 2C11D9
Source: Mouse	UNIPROT ID: Q15418	Recommended Dilutions: WB 1:5000-1:50000 IF/ICC 1:200-1:800
Isotype: IgG1	Full Name: ribosomal protein S6 kinase, 90kDa, polypeptide 1	
	Calculated MW: 735 aa, 83 kDa	
	Observed MW: 80 kDa	

Applications

Tested Applications: WB, IF/ICC, ELISA	Positive Controls:
Species Specificity: Human, Mouse	WB : NIH/3T3 cells, HeLa cells, λ phosphatase treated HeLa cells, λ phosphatase treated NIH/3T3 cells
	IF/ICC : λ phosphatase treated HeLa cells,

Background Information

The 90 kDa ribosomal S6 kinases (RSK1-4) are a family of widely expressed serine/threonine kinases and play an important role in the MAPK signaling cascade and act downstream of ERK1/2 signaling. It can mediate mitogenic and stress-induced activation of the transcription factors CREB1, ETV1/ER81 and NR4A1/NUR77. RSK1 (RPS6KA1) is also designated as p90RSK associated with cellular proliferation, survival and differentiation. RPS6KA1 has some phosphorylation sites including Ser380, Thr359 and Ser363 which are important for kinase activation. (PMID: 16458888, 30813401, 17259979, 10679322)

Storage

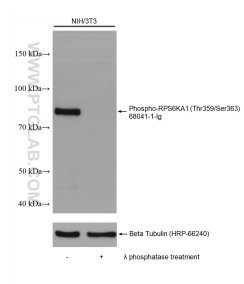
Storage:
Store at -20°C. Stable for one year after shipment.
Storage Buffer:
PBS with 0.02% sodium azide and 50% glycerol pH 7.3.
Aliquoting is unnecessary for -20°C storage

*** 20ul sizes contain 0.1% BSA

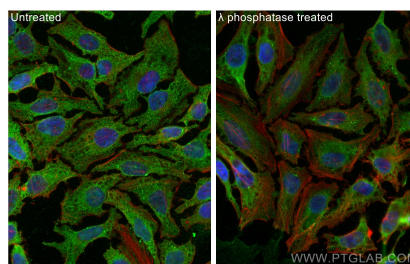
For technical support and original validation data for this product please contact:
T: 1 (888) 4PTGLAB (1-888-478-4522) (toll free in USA), or 1(312) 455-8498 (outside USA)
E: proteintech@ptglab.com
W: ptglab.com

This product is exclusively available under Proteintech Group brand and is not available to purchase from any other manufacturer.

Selected Validation Data



Non-treated and λ phosphatase treated NIH/3T3 cells were subjected to SDS PAGE followed by western blot with 68041-1-Ig (Phospho-RPS6KA1 (Thr359/Ser363) antibody) at dilution of 1:20000 incubated at room temperature for 1.5 hours. The membrane was stripped and re-blotted with Beta-Tubulin (HRP-66240) as loading control.



Immunofluorescent analysis of (4% PFA) fixed λ phosphatase treated HeLa cells using Phospho-RPS6KA1 (Thr359/Ser363) antibody (68041-1-Ig, Clone: 2C11D9) at dilution of 1:400 and CoraLite®488-Conjugated AffiniPure Goat Anti-Mouse IgG(H+L), CL594-Phalloidin (red).