

For Research Use Only

SNCB Monoclonal antibody

Catalog Number: 68046-1-Ig



Basic Information

Catalog Number: 68046-1-Ig	GenBank Accession Number: BC002902	Purification Method: Protein G purification
Size: 150ul , Concentration: 1000 µg/ml by Nanodrop;	GeneID (NCBI): 6620	CloneNo.: 2B10E10
Source: Mouse	Full Name: synuclein, beta	Recommended Dilutions: WB 1:5000-1:50000 IF 1:200-1:800
Isotype: IgG1	Calculated MW: 14 kDa	
Immunogen Catalog Number: AG0772	Observed MW: 18 kDa	

Applications

Tested Applications: IF, WB, ELISA	Positive Controls:
Species Specificity: Human, mouse, rat, pig, rabbit, chicken	WB : pig brain tissue, rabbit brain, rat brain, mouse brain, chicken brain IF : mouse brain tissue,

Background Information

Storage

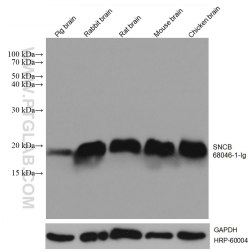
Storage:
Store at -20°C. Stable for one year after shipment.
Storage Buffer:
PBS with 0.02% sodium azide and 50% glycerol pH 7.3.
Aliquoting is unnecessary for -20°C storage

*** 20ul sizes contain 0.1% BSA

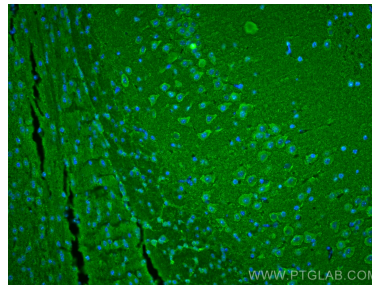
For technical support and original validation data for this product please contact:
T: 1 (888) 4PTGLAB (1-888-478-4522) (toll free in USA), or 1(312) 455-8498 (outside USA)
E: proteintech@ptglab.com
W: ptglab.com

This product is exclusively available under Proteintech Group brand and is not available to purchase from any other manufacturer.

Selected Validation Data



Brain tissues were subjected to SDS PAGE followed by western blot with 68046-1-Ig (SNCB antibody) at dilution of 1:10000 incubated at room temperature for 1.5 hours. The membrane was stripped and reblotted with HRP-conjugated GAPDH Monoclonal antibody (HRP-60004) as loading control.



Immunofluorescent analysis of (4% PFA) fixed mouse brain tissue using SNCB antibody (68046-1-Ig, Clone: 2B10E10) at dilution of 1:400 and CoraLite®488-Conjugated AffiniPure Goat Anti-Mouse IgG(H+L).