

For Research Use Only

SNCB Monoclonal antibody, PBS Only

Catalog Number: 68046-1-PBS



Basic Information

Catalog Number:

68046-1-PBS

Size:

100ug , Concentration: 1 mg/ml by Nanodrop;

Source:

Mouse

Isotype:

IgG1

Immunogen Catalog Number:

AG0772

GenBank Accession Number:

BC002902

GeneID (NCBI):

6620

UNIPROT ID:

Q16143

Full Name:

synuclein, beta

Calculated MW:

14 kDa

Observed MW:

18 kDa

Purification Method:

Protein G purification

CloneNo.:

2B10E10

Applications

Tested Applications:

WB, IF, Indirect ELISA

Species Specificity:

Human, mouse, rat, pig, rabbit, chicken

Storage

Storage:

Store at -80°C.

Storage Buffer:

PBS Only

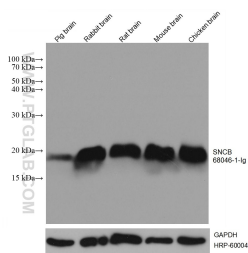
For technical support and original validation data for this product please contact:

T: 1 (888) 4PTGLAB (1-888-478-4522) (toll free in USA), or 1(312) 455-8498 (outside USA)

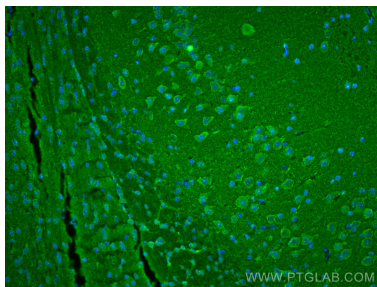
E: proteintech@ptglab.com
W: ptglab.com

This product is exclusively available under Proteintech Group brand and is not available to purchase from any other manufacturer.

Selected Validation Data



Brain tissues were subjected to SDS PAGE followed by western blot with 68046-1-Ig (SNCB antibody) at dilution of 1:10000 incubated at room temperature for 1.5 hours. The membrane was stripped and reblotted with HRP-conjugated GAPDH Monoclonal antibody (HRP-60004) as loading control. This data was developed using the same antibody clone with 68046-1-PBS in a different storage buffer formulation.



Immunofluorescent analysis of (4% PFA) fixed mouse brain tissue using SNCB antibody (68046-1-Ig, Clone: 2B10E10) at dilution of 1:400 and CoraLite®488-Conjugated AffiniPure Goat Anti-Mouse IgG(H+L). This data was developed using the same antibody clone with 68046-1-PBS in a different storage buffer formulation.