

For Research Use Only

TPPP Monoclonal antibody, PBS Only

Catalog Number: 68048-1-PBS

Featured Product



Basic Information

Catalog Number:

68048-1-PBS

Size:

100ug, Concentration: 1mg/ml by Nanodrop;

Source:

Mouse

Isotype:

IgG2b

Immunogen Catalog Number:

AG19046

GenBank Accession Number:

BC131506

GeneID (NCBI):

11076

UNIPROT ID:

O94811

Full Name:

tubulin polymerization promoting protein

Calculated MW:

219 aa, 24 kDa

Observed MW:

24-29 kDa

Purification Method:

Protein A purification

CloneNo.:

1E5F5

Applications

Tested Applications:

WB, IHC, IF/ICC, Indirect ELISA

Species Specificity:

human, mouse, rat, pig, rabbit, chicken

Background Information

TPPP, also named as TPPP1, P24 and P25, belongs to the TPPP family. TPPP promotes in vitro the polymerization of tubulin into double-walled tubules and polymorphic aggregates or bundled stabilized microtubules blocks. When overexpressed, TPPP inhibits mitotic spindle assembly and nuclear envelope breakdown, apparently without affecting other cellular events.

Storage

Storage:

Store at -80°C.

Storage Buffer:

PBS Only

For technical support and original validation data for this product please contact:

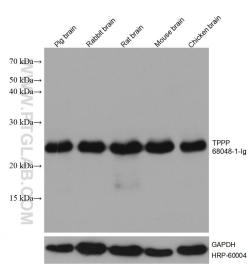
T: 1 (888) 4PTGLAB (1-888-478-4522) (toll free in USA), or 1(312) 455-8498 (outside USA)

E: proteintech@ptglab.com

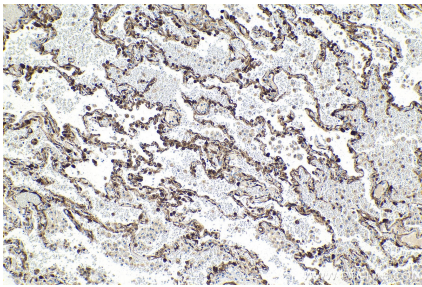
W: ptglab.com

This product is exclusively available under Proteintech Group brand and is not available to purchase from any other manufacturer.

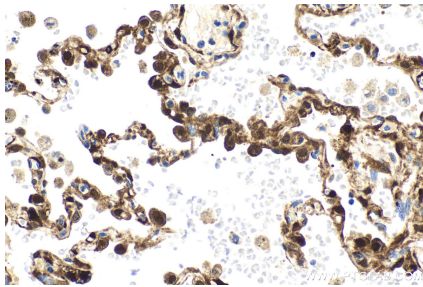
Selected Validation Data



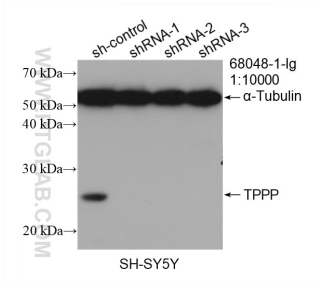
Brain tissues were subjected to SDS PAGE followed by western blot with 68048-1-Ig (TPPP antibody) at dilution of 1:10000 incubated at room temperature for 1.5 hours. The membrane was stripped and reblotted with HRP-conjugated GAPDH Monoclonal antibody (HRP-60004) as loading control. This data was developed using the same antibody clone with 68048-1-PBS in a different storage buffer formulation.



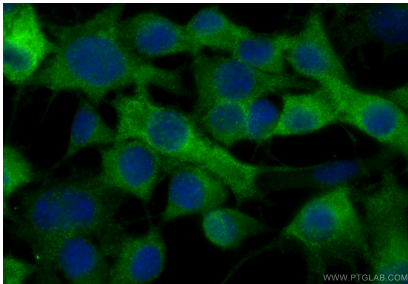
Immunohistochemical analysis of paraffin-embedded human lung tissue slide using 68048-1-Ig (TPPP antibody) at dilution of 1:1000 (under 10x lens). Heat mediated antigen retrieval with Tris-EDTA buffer (pH 9.0). This data was developed using the same antibody clone with 68048-1-PBS in a different storage buffer formulation.



Immunohistochemical analysis of paraffin-embedded human lung tissue slide using 68048-1-Ig (TPPP antibody) at dilution of 1:1000 (under 40x lens). Heat mediated antigen retrieval with Tris-EDTA buffer (pH 9.0). This data was developed using the same antibody clone with 68048-1-PBS in a different storage buffer formulation.



WB result of TPPP antibody (68048-1-Ig; 1:10000; incubated at room temperature for 1.5 hours) with sh-Control and sh-TPPP transfected SH-SY5Y cells. This data was developed using the same antibody clone with 68048-1-PBS in a different storage buffer formulation.



Immunofluorescent analysis of (-20°C Ethanol) fixed Neuro-2a cells using TPPP antibody (68048-1-Ig, Clone: 1E5F5) at dilution of 1:800 and Coralite®488-Conjugated Goat Anti-Mouse IgG(H+L) (SA00013-1). This data was developed using the same antibody clone with 68048-1-PBS in a different storage buffer formulation.