

For Research Use Only

GAS2L1 Monoclonal antibody

Catalog Number: 68051-1-Ig



Basic Information

Catalog Number: 68051-1-Ig	GenBank Accession Number: BC011047	Purification Method: Protein G purification
Size: 150ul , Concentration: 1000 µg/ml by Nanodrop;	GeneID (NCBI): 10634	CloneNo.: 2C6D5
Source: Mouse	Full Name: growth arrest-specific 2 like 1	Recommended Dilutions: WB 1:1000-1:4000 IHC 1:50-1:500
Isotype: IgG1	Calculated MW: 73 kDa	
Immunogen Catalog Number: AG31232	Observed MW: 73 kDa	

Applications

Tested Applications:

IHC, WB, ELISA

Species Specificity:

Human, Mouse

Note-IHC: suggested antigen retrieval with TE buffer pH 9.0; (*) Alternatively, antigen retrieval may be performed with citrate buffer pH 6.0

Positive Controls:

WB: Jurkat cells, mouse testis tissue, K-562 cells, NIH/3T3 cells, 4T1 cells

IHC: mouse testis tissue,

Background Information

GAS2L1 (growth arrest-specific 2-like 1) is a component of the cytoskeleton that mediates the interaction between microtubules and microfilament (PMID: 34555082). GAS2L1 contains an N-terminal actin-binding calponin homology (CH) domain, a MT lattice-binding Gas2-related (GAR) domain and a C-terminal SxIP motif, which mediates the interaction with MT plus ends via EB proteins. GAS2L1 regulates microtubule dynamics and stability by interacting with microtubule plus-end tracking proteins, such as MAPRE1, to regulate microtubule growth along actin stress fibers (PubMed:24706950).

Storage

Storage:

Store at -20°C. Stable for one year after shipment.

Storage Buffer:

PBS with 0.02% sodium azide and 50% glycerol pH 7.3.

Aliquoting is unnecessary for -20°C storage

*** 20ul sizes contain 0.1% BSA

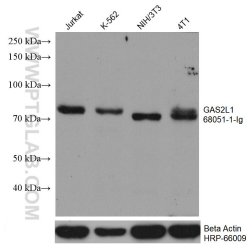
For technical support and original validation data for this product please contact:

T: 1 (888) 4PTGLAB (1-888-478-4522) (toll free in USA), or 1(312) 455-8498 (outside USA)

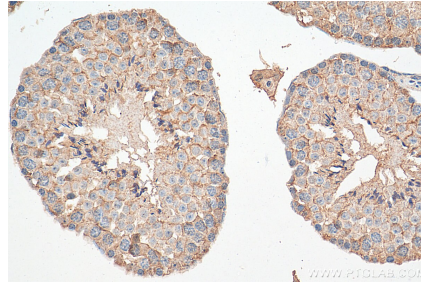
E: proteintech@ptglab.com
W: ptglab.com

This product is exclusively available under Proteintech Group brand and is not available to purchase from any other manufacturer.

Selected Validation Data



Jurkat cells were subjected to SDS PAGE followed by western blot with 68051-1-Ig (GAS2L1 antibody) at dilution of 1:2000 incubated at room temperature for 1.5 hours. The membrane was stripped and reblotted with HRP-conjugated Beta Actin Monoclonal antibody (HRP-66009) as loading control.



Immunohistochemical analysis of paraffin-embedded mouse testis tissue slide using 68051-1-Ig (GAS2L1 antibody) at dilution of 1:200 (under 40x lens). Heat mediated antigen retrieval with Tris-EDTA buffer (pH 9.0).