

For Research Use Only

RPL9 Monoclonal antibody

Catalog Number: 68054-1-Ig **1 Publications**



Basic Information

Catalog Number: 68054-1-Ig	GenBank Accession Number: BC066318	Purification Method: Protein G purification
Size: 150ul , Concentration: 1000 ug/ml by Nanodrop;	GeneID (NCBI): 6133	CloneNo.: 2A6B11
Source: Mouse	UNIPROT ID: P32969	Recommended Dilutions: WB 1:5000-1:50000 IHC 1:500-1:2000 IF-P 1:200-1:800
Isotype: IgG1	Full Name: ribosomal protein L9	
Immunogen Catalog Number: AG5391	Calculated MW: 22 kDa	
	Observed MW: 22 kDa	

Applications

Tested Applications: WB, IHC, IF-P, ELISA	Positive Controls:
Cited Applications: WB	WB : HeLa cells, HEK-293 cells, Jurkat cells, A549 cells, HepG2 cells, MCF-7 cells, U2OS cells, HSC-T6 cells, NIH/3T3 cells
Species Specificity: human, mouse, rat	IHC : mouse cerebellum tissue,
Cited Species: rat	IF-P : mouse cerebellum tissue,
Note-IHC: suggested antigen retrieval with TE buffer pH 9.0; (*) Alternatively, antigen retrieval may be performed with citrate buffer pH 6.0	

Notable Publications

Author	Pubmed ID	Journal	Application
Xiaorong Jian	37891366	J Cardiovasc Transl Res	WB

Storage

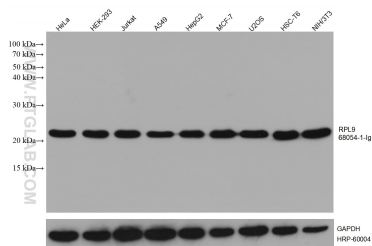
Storage:
Store at -20°C. Stable for one year after shipment.
Storage Buffer:
PBS with 0.02% sodium azide and 50% glycerol, pH7.3
Aliquoting is unnecessary for -20°C storage

*** 20ul sizes contain 0.1% BSA

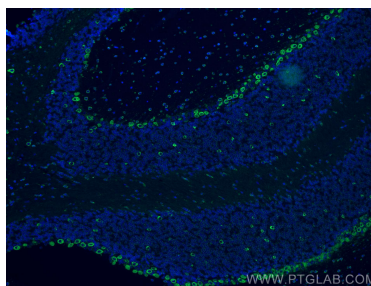
For technical support and original validation data for this product please contact:
T: 1 (888) 4PTGLAB (1-888-478-4522) (toll free in USA), or 1(312) 455-8498 (outside USA)
E: proteintech@ptglab.com
W: ptglab.com

This product is exclusively available under Proteintech Group brand and is not available to purchase from any other manufacturer.

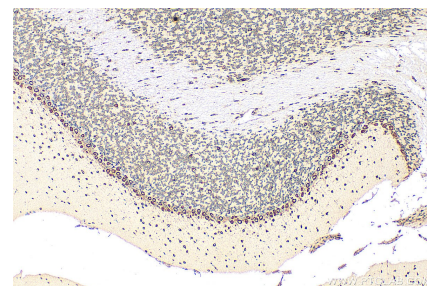
Selected Validation Data



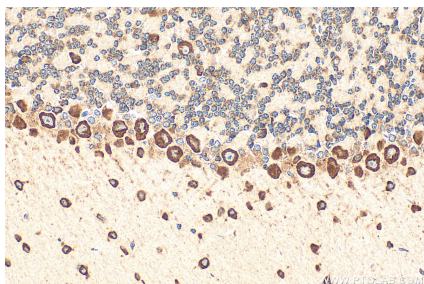
Various lysates were subjected to SDS PAGE followed by western blot with 68054-1-Ig (RPL9 antibody) at dilution of 1:10000 incubated at room temperature for 1.5 hours. The membrane was stripped and reblotted with HRP-conjugated GAPDH Monoclonal antibody (HRP-60004) as loading control.



Immunofluorescent analysis of (4% PFA) fixed mouse cerebellum tissue using RPL9 antibody (68054-1-Ig, Clone: 2A6B11) at dilution of 1:400 and CoraLite®488-Conjugated AffiniPure Goat Anti-Mouse IgG(H+L).



Immunohistochemical analysis of paraffin-embedded mouse cerebellum tissue slide using 68054-1-Ig (RPL9 antibody) at dilution of 1:1000 (under 10x lens). Heat mediated antigen retrieval with Tris-EDTA buffer (pH 9.0).



Immunohistochemical analysis of paraffin-embedded mouse cerebellum tissue slide using 68054-1-Ig (RPL9 antibody) at dilution of 1:1000 (under 40x lens). Heat mediated antigen retrieval with Tris-EDTA buffer (pH 9.0).