

FXYP6 Monoclonal antibody, PBS Only

Catalog Number: 68058-1-PBS

Basic Information

Catalog Number: 68058-1-PBS	GenBank Accession Number: BC018652	Purification Method: Protein G purification
Size: 100ug , Concentration: 1 mg/ml by Nanodrop;	GeneID (NCBI): 53826	CloneNo.: 2H1B7
Source: Mouse	UNIPROT ID: Q9H0Q3	
Isotype: IgG1	Full Name: FXYP domain containing ion transport regulator 6	
Immunogen Catalog Number: AG8538	Calculated MW: 95 aa, 11 kDa	
	Observed MW: 20 kDa	

Applications

Tested Applications:
WB, IF, IHC, Indirect ELISA

Species Specificity:
Human, Mouse, Rat, Pig, Rabbit, Chicken

Background Information

The FXYP family is a group of small single-span transmembrane proteins characterized by a signature sequence containing an FXYP motif, two conserved glycines and a serine residue. Members of the FXYP family, including FXYP1 (phospholemmann), FXYP2 (gamma subunit of Na,K-ATPase), FXYP3 (Mat8), FXYP4 (CHIF), FXYP5 (RIC), FXYP6 (phosphohippolin) and FXYP7, are tissue specific regulators of the Na,K-ATPase. FXYP6 is primarily expressed in the brain. It modulates the kinetic activity of Na,K-ATPase and has long-term physiological importance in maintaining cation homeostasis. It may play a role in endolymph composition and has a potential important role in neuronal excitability of the CNS during postnatal development and in the adult brain. On the SDS-PAGE FXYP6 migrates with an apparent molecular weight of approximately 20 kDa, which is larger than the calculated molecular weight of 10.5 kDa (PMID: 15193427; 17209044). The gene encodes FXYP6 is located on chromosome 11q23.3, and it might be a susceptibility gene of schizophrenia.

Storage

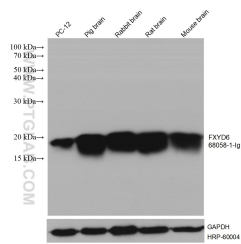
Storage:
Store at -80°C.

Storage Buffer:
PBS Only

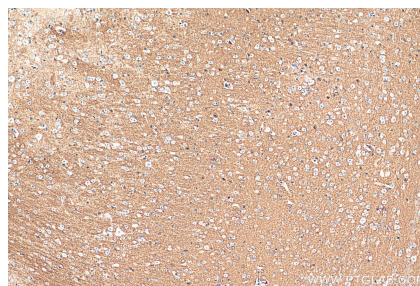
For technical support and original validation data for this product please contact:
T: 1 (888) 4PTGLAB (1-888-478-4522) (toll free in USA), or 1(312) 455-8498 (outside USA)
E: proteintech@ptglab.com
W: ptglab.com

This product is exclusively available under Proteintech Group brand and is not available to purchase from any other manufacturer.

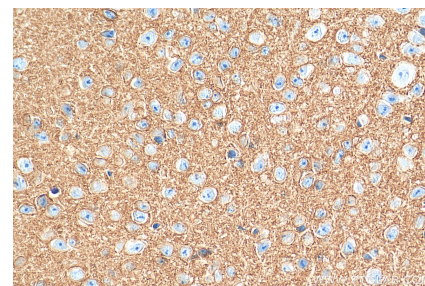
Selected Validation Data



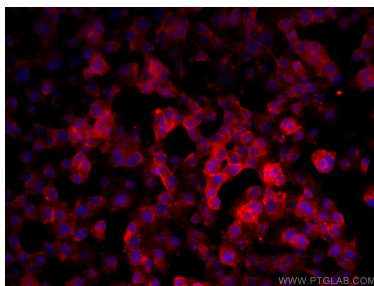
Various lysates were subjected to SDS PAGE followed by western blot with 68058-1-Ig (FXYD6 antibody) at dilution of 1:10000 incubated at room temperature for 1.5 hours. The membrane was stripped and reblotted with HRP-conjugated GAPDH Monoclonal antibody (HRP-60004) as loading control. This data was developed using the same antibody clone with 68058-1-PBS in a different storage buffer formulation.



Immunohistochemical analysis of paraffin-embedded mouse cerebellum tissue slide using 68058-1-Ig (FXYD6 antibody) at dilution of 1:1000 (under 10x lens). Heat mediated antigen retrieval with Tris-EDTA buffer (pH 9.0). This data was developed using the same antibody clone with 68058-1-PBS in a different storage buffer formulation.



Immunohistochemical analysis of paraffin-embedded mouse cerebellum tissue slide using 68058-1-Ig (FXYD6 antibody) at dilution of 1:1000 (under 40x lens). Heat mediated antigen retrieval with Tris-EDTA buffer (pH 9.0). This data was developed using the same antibody clone with 68058-1-PBS in a different storage buffer formulation.



Immunofluorescent analysis of (4% PFA) fixed PC-12 cells using FXYD6 antibody (68058-1-Ig, Clone: 2H1B7) at dilution of 1:800 and CoraLite®594-Conjugated AffiniPure Goat Anti-Mouse IgG(H+L). This data was developed using the same antibody clone with 68058-1-PBS in a different storage buffer formulation.