

For Research Use Only

# GEN1 Monoclonal antibody

Catalog Number: 68060-1-Ig



## Basic Information

<b>Catalog Number:</b> 68060-1-Ig	<b>GenBank Accession Number:</b> NM_182625	<b>Purification Method:</b> Protein G purification
<b>Size:</b> 150ul , Concentration: 1000 µg/ml by Nanodrop;	<b>GeneID (NCBI):</b> 348654	<b>CloneNo.:</b> 1A10D10
<b>Source:</b> Mouse	<b>Full Name:</b> Gen homolog 1, endonuclease (Drosophila)	<b>Recommended Dilutions:</b> WB 1:1000-1:4000
<b>Isotype:</b> IgG1	<b>Calculated MW:</b> 103 kDa	
<b>Immunogen Catalog Number:</b> AG31247	<b>Observed MW:</b> 98-100 kDa	

## Applications

<b>Tested Applications:</b> WB, ELISA	<b>Positive Controls:</b> WB : HEK-293 cells, U2OS cells, A549 cells, K-562 cells, Daudi cells
<b>Species Specificity:</b> Human	

## Background Information

GEN1 is a endonuclease which resolves Holliday junctions (HJs) by the introduction of symmetrically related cuts across the junction point, to produce nicked duplex products in which the nicks can be readily ligated. GEN1 efficiently cleaves both single and double HJs contained within large recombination intermediates.

## Storage

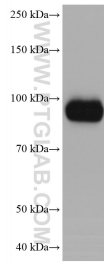
**Storage:**  
Store at -20°C.  
**Storage Buffer:**  
PBS with 0.02% sodium azide and 50% glycerol pH 7.3.  
Aliquoting is unnecessary for -20°C storage

\*\*\* 20ul sizes contain 0.1% BSA

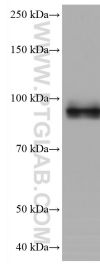
For technical support and original validation data for this product please contact:  
T: 1 (888) 4PTGLAB (1-888-478-4522) (toll free in USA), or 1(312) 455-8498 (outside USA)  
E: proteintech@ptglab.com  
W: ptglab.com

This product is exclusively available under Proteintech Group brand and is not available to purchase from any other manufacturer.

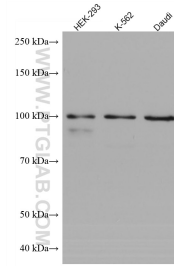
## Selected Validation Data



U2OS cells were subjected to SDS PAGE followed by western blot with 68060-1-Ig (GEN1 antibody) at dilution of 1:2000 incubated at room temperature for 1.5 hours.



A549 cells were subjected to SDS PAGE followed by western blot with 68060-1-Ig (GEN1 antibody) at dilution of 1:2000 incubated at room temperature for 1.5 hours.



Various lysates were subjected to SDS PAGE followed by western blot with 68060-1-Ig (GEN1 antibody) at dilution of 1:2000 incubated at room temperature for 1.5 hours.