

For Research Use Only

# NSF Monoclonal antibody

Catalog Number: 68061-1-Ig

Featured Product



## Basic Information

Catalog Number:

68061-1-Ig

Size:

150ul, Concentration: 1000 ug/ml by

Nanodrop;

Source:

Mouse

Isotype:

IgG2a

Immunogen Catalog Number:

AG15422

GenBank Accession Number:

BC030613

GeneID (NCBI):

4905

UNIPROT ID:

P46459

Full Name:

N-ethylmaleimide-sensitive factor

Calculated MW:

744 aa, 83 kDa

Observed MW:

70-83 kDa

Purification Method:

Protein A purification

CloneNo.:

2B6H6

Recommended Dilutions:

WB 1:5000-1:50000

IHC 1:300-1:1200

IF-P 1:300-1:1200

## Applications

Tested Applications:

WB, IHC, IF-P, ELISA

Species Specificity:

human, mouse, rat, pig, rabbit, chicken

**Note-IHC: suggested antigen retrieval with TE buffer pH 9.0; (\*) Alternatively, antigen retrieval may be performed with citrate buffer pH 6.0**

Positive Controls:

WB : pig brain tissue, SH-SY5Y cells, PC-12 cells, HEK-293 cells, Rabbit brain tissue, Rat brain tissue, Mouse brain tissue, Chicken brain tissue

IHC : rat brain tissue,

IF-P : mouse brain tissue,

## Storage

Storage:

Store at -20°C. Stable for one year after shipment.

Storage Buffer:

PBS with 0.02% sodium azide and 50% glycerol, pH7.3

Aliquoting is unnecessary for -20°C storage

\*\*\* 20ul sizes contain 0.1% BSA

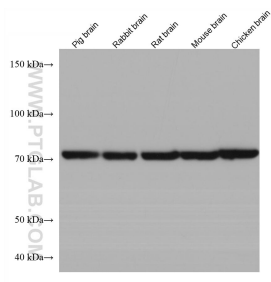
For technical support and original validation data for this product please contact:

T: 1 (888) 4PTGLAB (1-888-478-4522) (toll free in USA), or 1(312) 455-8498 (outside USA)

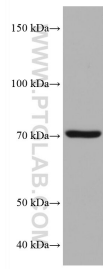
E: [proteintech@ptglab.com](mailto:proteintech@ptglab.com)  
W: [ptglab.com](http://ptglab.com)

This product is exclusively available under Proteintech Group brand and is not available to purchase from any other manufacturer.

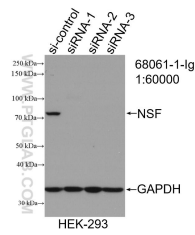
Selected Validation Data



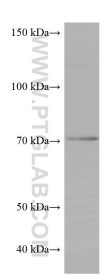
Various lysates were subjected to SDS PAGE followed by western blot with 68061-1-Ig (NSF antibody) at dilution of 1:10000 incubated at room temperature for 1.5 hours.



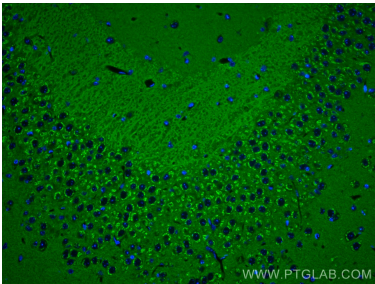
PC-12 cells were subjected to SDS PAGE followed by western blot with 68061-1-Ig (NSF antibody) at dilution of 1:10000 incubated at room temperature for 1.5 hours.



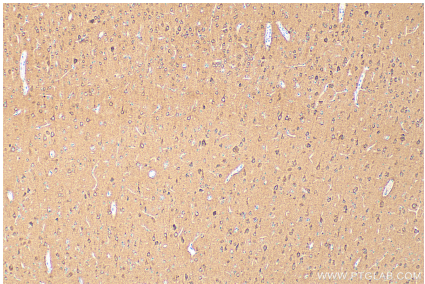
WB result of NSF antibody (68061-1-Ig; 1:60000; incubated at room temperature for 1.5 hours) with sh-Control and sh-NSF transfected HEK-293 cells.



SH-SY5Y cells were subjected to SDS PAGE followed by western blot with 68061-1-Ig (NSF antibody) at dilution of 1:10000 incubated at room temperature for 1.5 hours.



Immunofluorescent analysis of (4% PFA) fixed mouse brain tissue using NSF antibody (68061-1-Ig, Clone: 2B6H6 ) at dilution of 1:600 and Coralite® 488-Conjugated AffiniPure Goat Anti-Mouse IgG(H+L).



Immunohistochemical analysis of paraffin-embedded rat brain tissue slide using 68061-1-Ig (NSF antibody) at dilution of 1:600 (under 10x lens). Heat mediated antigen retrieval with Tris-EDTA buffer (pH 9.0).