

For Research Use Only

NSF Monoclonal antibody, PBS Only

Catalog Number: 68061-1-PBS

Featured Product



Basic Information

Catalog Number:

68061-1-PBS

Size:

100ug, Concentration: 1mg/ml by Nanodrop;

Source:

Mouse

Isotype:

IgG2a

Immunogen Catalog Number:

AG15422

GenBank Accession Number:

BC030613

GeneID (NCBI):

4905

UNIPROT ID:

P46459

Full Name:

N-ethylmaleimide-sensitive factor

Calculated MW:

744 aa, 83 kDa

Observed MW:

70-83 kDa

Purification Method:

Protein A purification

CloneNo.:

2B6H6

Applications

Tested Applications:

WB, IHC, IF-P, Indirect ELISA

Species Specificity:

human, mouse, rat, pig, rabbit, chicken

Storage

Storage:

Store at -80°C.

Storage Buffer:

PBS only, pH7.3

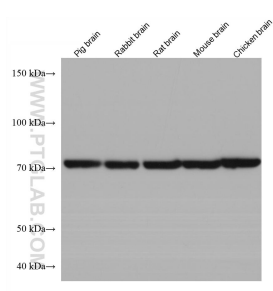
For technical support and original validation data for this product please contact:

T: 1 (888) 4PTGLAB (1-888-478-4522) (toll free in USA), or 1(312) 455-8498 (outside USA)

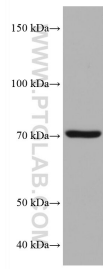
E: proteintech@ptglab.com
W: ptglab.com

This product is exclusively available under Proteintech Group brand and is not available to purchase from any other manufacturer.

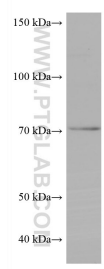
Selected Validation Data



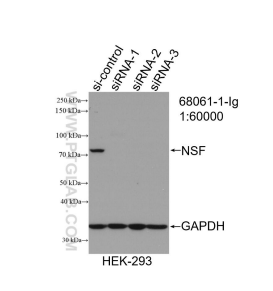
Various lysates were subjected to SDS PAGE followed by western blot with 68061-1-Ig (NSF antibody) at dilution of 1:10000 incubated at room temperature for 1.5 hours. This data was developed using the same antibody clone with 68061-1-PBS in a different storage buffer formulation.



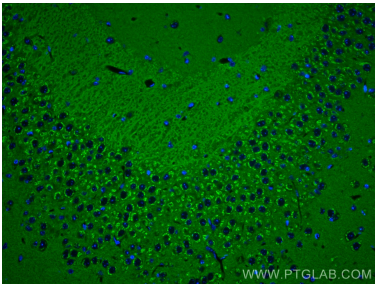
PC-12 cells were subjected to SDS PAGE followed by western blot with 68061-1-Ig (NSF antibody) at dilution of 1:10000 incubated at room temperature for 1.5 hours. This data was developed using the same antibody clone with 68061-1-PBS in a different storage buffer formulation.



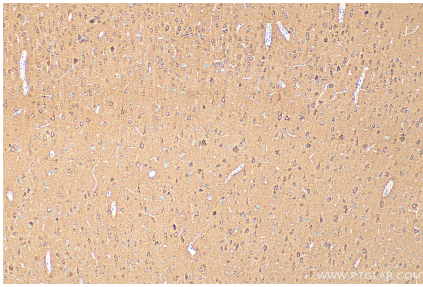
SH-SY5Y cells were subjected to SDS PAGE followed by western blot with 68061-1-Ig (NSF antibody) at dilution of 1:10000 incubated at room temperature for 1.5 hours. This data was developed using the same antibody clone with 68061-1-PBS in a different storage buffer formulation.



WB result of NSF antibody (68061-1-Ig; 1:60000; incubated at room temperature for 1.5 hours) with sh-Control and sh-NSF transfected HEK-293 cells. This data was developed using the same antibody clone with 68061-1-PBS in a different storage buffer formulation.



Immunofluorescent analysis of (4% PFA) fixed mouse brain tissue using NSF antibody (68061-1-Ig; Clone: 2B6H6) at dilution of 1:600 and Coralite®488-Conjugated AffiniPure Goat Anti-Mouse IgG(H+L). This data was developed using the same antibody clone with 68061-1-PBS in a different storage buffer formulation.



Immunohistochemical analysis of paraffin-embedded rat brain tissue slide using 68061-1-Ig (NSF antibody) at dilution of 1:600 (under 10x lens). Heat mediated antigen retrieval with Tris-EDTA buffer (pH 9.0). This data was developed using the same antibody clone with 68061-1-PBS in a different storage buffer formulation.