

For Research Use Only

# NBR1 Monoclonal antibody

Catalog Number: 68062-1-Ig



## Basic Information

<b>Catalog Number:</b> 68062-1-Ig	<b>GenBank Accession Number:</b> BC009808	<b>Purification Method:</b> Protein G purification
<b>Size:</b> 150ul , Concentration: 1000 ug/ml by Nanodrop;	<b>GeneID (NCBI):</b> 4077	<b>CloneNo.:</b> 1F2B2
<b>Source:</b> Mouse	<b>UNIPROT ID:</b> Q14596	<b>Recommended Dilutions:</b> WB 1:2000-1:10000
<b>Isotype:</b> IgG1	<b>Full Name:</b> neighbor of BRCA1 gene 1	
<b>Immunogen Catalog Number:</b> AG8652	<b>Calculated MW:</b> 966 aa, 107 kDa	
	<b>Observed MW:</b> 140 kDa	

## Applications

<b>Tested Applications:</b> WB, ELISA	<b>Positive Controls:</b> WB : NCCIT cells, hTERT-RPE1 cells, HeLa cells, HEK-293 cells, K-562 cells, rat testis tissue, mouse testis tissue
<b>Species Specificity:</b> Human, mouse, rat	

## Background Information

NBR1, also named as 1A13B, KIAA0049 and M17S2, acts probably as a receptor for selective autophagosomal degradation of ubiquitinated targets. NBR1 and P62 can bind to autophagic effector proteins (Atg8 in yeast, MAP1LC3 protein family in mammals) anchored in the membrane of autophagosomes. It is a highly conserved multidomain scaffold protein with proposed roles in endocytic trafficking and selective autophagy. NBR1 is a novel PB1 adapter in Th2 differentiation and asthma. It functions as an autophagy receptor involved in targeting ubiquitinated proteins for degradation. It also has a dual role as a scaffold protein to regulate growth-factor receptor and downstream signaling pathways. Observed MW of NBR1 is 140 kDa (PMID: 22654911, PMID: 22484440).

## Storage

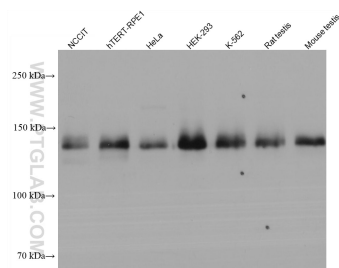
**Storage:**  
Store at -20°C.  
**Storage Buffer:**  
PBS with 0.02% sodium azide and 50% glycerol pH 7.3.  
Aliquoting is unnecessary for -20°C storage

\*\*\* 20ul sizes contain 0.1% BSA

For technical support and original validation data for this product please contact:  
T: 1 (888) 4PTGLAB (1-888-478-4522) (toll free in USA), or 1(312) 455-8498 (outside USA)  
E: [proteintech@ptglab.com](mailto:proteintech@ptglab.com)  
W: [ptglab.com](http://ptglab.com)

This product is exclusively available under Proteintech Group brand and is not available to purchase from any other manufacturer.

## Selected Validation Data



Various lysates were subjected to SDS PAGE followed by western blot with 68062-1-Ig (NBR1 antibody) at dilution of 1:5000 incubated at room temperature for 1.5 hours.