

For Research Use Only

# TBC1D4 Monoclonal antibody

Catalog Number: 68063-1-Ig



## Basic Information

<b>Catalog Number:</b> 68063-1-Ig	<b>GenBank Accession Number:</b> BC151239	<b>Purification Method:</b> Protein G purification
<b>Size:</b> 150ul , Concentration: 1000 ug/ml by Nanodrop;	<b>GeneID (NCBI):</b> 9882	<b>CloneNo.:</b> 1E2H2
<b>Source:</b> Mouse	<b>UNIPROT ID:</b> O60343	<b>Recommended Dilutions:</b> WB 1:1000-1:6000
<b>Isotype:</b> IgG1	<b>Full Name:</b> TBC1 domain family, member 4	
<b>Immunogen Catalog Number:</b> AG20341	<b>Calculated MW:</b> 1299 aa, 147 kDa	
	<b>Observed MW:</b> 160 kDa	

## Applications

<b>Tested Applications:</b> WB, ELISA	<b>Positive Controls:</b> WB : HeLa cells, HepG2 cells, HCT 116 cells, LNCaP cells, Jurkat cells, K-562 cells
<b>Species Specificity:</b> Human	

## Background Information

TBC1D4, also named as AS160, KIAA0603, may act as a GTPase-activating protein for RAB2A, RAB8A, RAB10 and RAB14. Isoform 2 promotes insulin-induced glucose transporter SLC2A4/GLUT4 translocation at the plasma membrane, thus increasing glucose uptake. The antibody recognizes all the isoform of TBC1D4.

## Storage

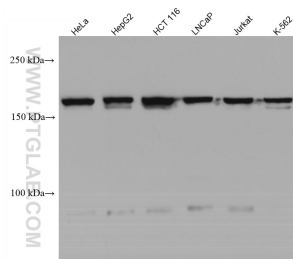
**Storage:**  
Store at -20°C.  
**Storage Buffer:**  
PBS with 0.02% sodium azide and 50% glycerol pH 7.3.  
Aliquoting is unnecessary for -20°C storage

\*\*\* 20ul sizes contain 0.1% BSA

For technical support and original validation data for this product please contact:  
T: 1 (888) 4PTGLAB (1-888-478-4522) (toll free in USA), or 1(312) 455-8498 (outside USA)  
E: [proteintech@ptglab.com](mailto:proteintech@ptglab.com)  
W: [ptglab.com](http://ptglab.com)

This product is exclusively available under Proteintech Group brand and is not available to purchase from any other manufacturer.

## Selected Validation Data



Various lysates were subjected to SDS PAGE followed by western blot with 68063-1-Ig (TBC1D4 antibody) at dilution of 1:3000 incubated at room temperature for 1.5 hours.