

For Research Use Only



TBC1D4 Monoclonal antibody, PBS Only

Catalog Number: 68063-1-PBS

Basic Information

Catalog Number: 68063-1-PBS	GenBank Accession Number: BC151239	Purification Method: Protein G purification
Size: 100ug , Concentration: 1 mg/ml by Nanodrop;	GeneID (NCBI): 9882	CloneNo.: 1E2H2
Source: Mouse	UNIPROT ID: O60343	
Isotype: IgG1	Full Name: TBC1 domain family, member 4	
Immunogen Catalog Number: AG20341	Calculated MW: 1299 aa, 147 kDa	
	Observed MW: 160 kDa	

Applications

Tested Applications:
WB, Indirect ELISA

Species Specificity:
Human

Background Information

TBC1D4, also named as AS160, KIAA0603, may act as a GTPase-activating protein for RAB2A, RAB8A, RAB10 and RAB14. Isoform 2 promotes insulin-induced glucose transporter SLC2A4/GLUT4 translocation at the plasma membrane, thus increasing glucose uptake.

Storage

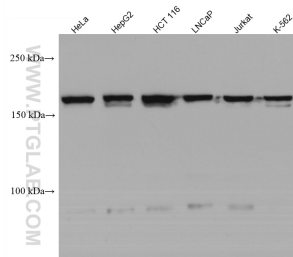
Storage:
Store at -80°C.

Storage Buffer:
PBS Only

For technical support and original validation data for this product please contact:
T: 1 (888) 4PTGLAB (1-888-478-4522) (toll free in USA), or 1(312) 455-8498 (outside USA)
E: proteintech@ptglab.com
W: ptglab.com

This product is exclusively available under Proteintech Group brand and is not available to purchase from any other manufacturer.

Selected Validation Data



Various lysates were subjected to SDS PAGE followed by western blot with 68063-1-Ig (TBC1D4 antibody) at dilution of 1:3000 incubated at room temperature for 1.5 hours. This data was developed using the same antibody clone with 68063-1-PBS in a different storage buffer formulation.