

For Research Use Only

EEA1 Monoclonal antibody

Catalog Number: 68065-1-Ig

Featured Product

14 Publications



Basic Information

Catalog Number:

68065-1-Ig

Size:

150ul, Concentration: 1000 ug/ml by Nanodrop;

Source:

Mouse

Isotype:

IgG1

Immunogen Catalog Number:

AG28814

GenBank Accession Number:

NM_003566

GeneID (NCBI):

8411

UNIPROT ID:

Q15075

Full Name:

early endosome antigen 1

Calculated MW:

162 kDa

Observed MW:

162 kDa

Purification Method:

Protein A purification

CloneNo.:

1E11E4

Recommended Dilutions:

WB 1:5000-1:50000

IF/ICC 1:1500-1:6000

Applications

Tested Applications:

WB, IF/ICC, ELISA

Cited Applications:

WB, IHC, IF

Species Specificity:

Human, Mouse, Rat

Cited Species:

human, mouse, monkey

Positive Controls:

WB : A431 cells, HepG2 cells, LNCaP cells, HeLa cells, HEK-293 cells, Jurkat cells, K-562 cells, HSC-T6 cells, NIH/3T3 cells

IF/ICC : HepG2 cells, HeLa cells

Background Information

Early endosome antigen 1 (EEA1) is a marker of early endosomes and has an important role in endosomal trafficking. EEA1 contains coiled-coil regions and an FYVE-type zinc finger which interacts with phosphatidylinositol-3-phosphate. EEA1 functions as a Rab5 effector, mediates endosome docking and, together with SNAREs, leads to membrane fusion.

Notable Publications

Author	Pubmed ID	Journal	Application
Honghong Zhan	36552516	Antioxidants (Basel)	IF
Jian Bao	34864680	J Alzheimers Dis	IF
Jing Yang	39920838	Vet Res	WB

Storage

Storage:

Store at -20°C. Stable for one year after shipment.

Storage Buffer:

PBS with 0.02% sodium azide and 50% glycerol, pH7.3

Aliquoting is unnecessary for -20°C storage

*** 20ul sizes contain 0.1% BSA

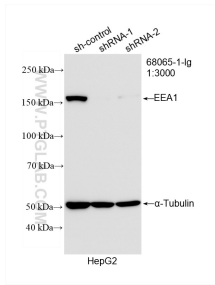
For technical support and original validation data for this product please contact:

T: 1 (888) 4PTGLAB (1-888-478-4522) (toll free in USA), or 1(312) 455-8498 (outside USA)

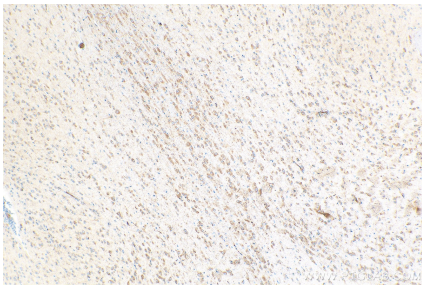
E: proteintech@ptglab.com
W: ptglab.com

This product is exclusively available under Proteintech Group brand and is not available to purchase from any other manufacturer.

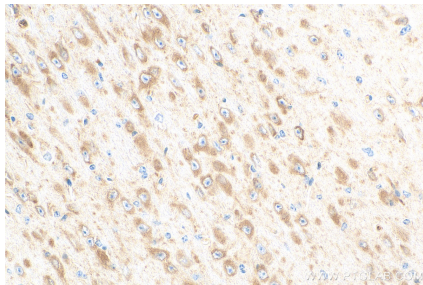
Selected Validation Data



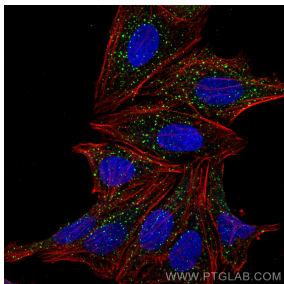
WB result of EEA1 antibody (68065-1-Ig; 1:3000; incubated at room temperature for 1.5 hours) with sh-Control and sh-EEA1 transfected HepG2 cells.



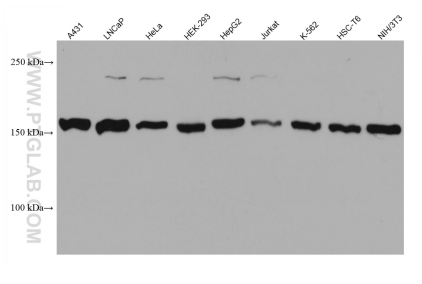
Immunohistochemical analysis of paraffin-embedded mouse brain tissue slide using 68065-1-Ig (EEA1 antibody) at dilution of 1:1000 (under 10x lens). Heat mediated antigen retrieval with Tris-EDTA buffer (pH 9.0).



Immunohistochemical analysis of paraffin-embedded mouse brain tissue slide using 68065-1-Ig (EEA1 antibody) at dilution of 1:1000 (under 40x lens). Heat mediated antigen retrieval with Tris-EDTA buffer (pH 9.0).



Immunofluorescent analysis of (4% PFA) fixed HepG2 cells using EEA1 antibody (68065-1-Ig, Clone: 1E11E4) at dilution of 1:3000 and CoraLite®488-Conjugated Goat Anti-Mouse IgG(H+L), CL594-Phalloidin (red).



Various lysates were subjected to SDS PAGE followed by western blot with 68065-1-Ig (EEA1 antibody) at dilution of 1:10000 incubated at room temperature for 1.5 hours.