

For Research Use Only

Ferritin light chain Monoclonal antibody



Catalog Number: 68068-1-Ig **3 Publications**

Basic Information

Catalog Number: 68068-1-Ig	GenBank Accession Number: BC008439	Purification Method: Protein G purification
Size: 150ul , Concentration: 1000 µg/ml by Nanodrop;	GeneID (NCBI): 2512	CloneNo.: 1F9F5
Source: Mouse	Full Name: ferritin, light polypeptide	Recommended Dilutions: WB 1:5000-1:50000 IHC 1:500-1:2000 IF 1:400-1:1600
Isotype: IgG1	Calculated MW: 19 kDa	
Immunogen Catalog Number: AG20637	Observed MW: 18-20 kDa	

Applications

Tested Applications:
IF, IHC, WB, ELISA

Cited Applications:
IHC, WB

Species Specificity:
Human, Mouse

Cited Species:
human, mouse

Positive Controls:

WB : A549 cells, HeLa cells, HepG2 cells, human placenta tissue

IHC : mouse brain tissue, human prostate cancer tissue, human liver cancer tissue, human colon cancer tissue

IF : HepG2 cells,

Note-IHC: suggested antigen retrieval with TE buffer pH 9.0; (*) Alternatively, antigen retrieval may be performed with citrate buffer pH 6.0

Background Information

FTL belongs to the ferritin family. It stores iron in a soluble, non-toxic, readily available form. FTL is important for iron homeostasis. It plays a role in delivery of iron to cells. FTL mediates iron uptake in capsule cells of the developing kidney. Mutation of FTL will cause hereditary hyperferritinemia-cataract syndrome (HHCS) or neurodegeneration with brain iron accumulation type 3 (NBIA3). Ferritin light polypeptide (FTL) and ferritin heavy polypeptide (FTH1) were the main constituents the striatum and cerebellar cortex revealed.

Notable Publications

Author	Pubmed ID	Journal	Application
Liqiu Li	35875069	Front Oncol	WB
Yoshiyuki Henning	35906211	Cell Death Dis	WB
Wanzhong Yuan	37504565	J Cardiovasc Dev Dis	IHC

Storage

Storage:

Store at -20°C. Stable for one year after shipment.

Storage Buffer:

PBS with 0.02% sodium azide and 50% glycerol pH 7.3.

Aliquoting is unnecessary for -20°C storage

***** 20ul sizes contain 0.1% BSA**

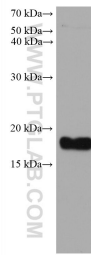
For technical support and original validation data for this product please contact:

T: 1 (888) 4PTGLAB (1-888-478-4522) (toll free in USA), or 1(312) 455-8498 (outside USA)

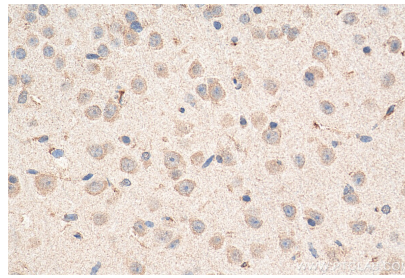
E: proteintech@ptglab.com
W: ptglab.com

This product is exclusively available under Proteintech Group brand and is not available to purchase from any other manufacturer.

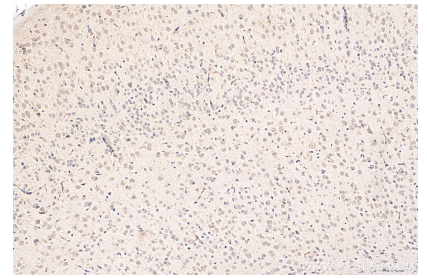
Selected Validation Data



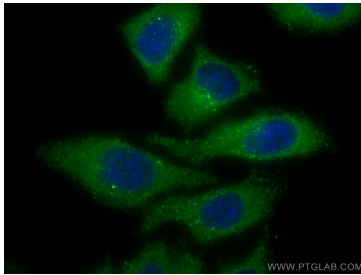
A549 cells were subjected to SDS PAGE followed by western blot with 68068-1-Ig (Ferritin light chain antibody) at dilution of 1:10000 incubated at room temperature for 1.5 hours.



Immunohistochemical analysis of paraffin-embedded mouse brain tissue slide using 68068-1-Ig (Ferritin light chain antibody) at dilution of 1:1000 (under 40x lens). Heat mediated antigen retrieval with Tris-EDTA buffer (pH 9.0).



Immunohistochemical analysis of paraffin-embedded mouse brain tissue slide using 68068-1-Ig (Ferritin light chain antibody) at dilution of 1:1000 (under 10x lens). Heat mediated antigen retrieval with Tris-EDTA buffer (pH 9.0).



Immunofluorescent analysis of (-20°C Methanol) fixed HepG2 cells using FTL antibody (68068-1-Ig, Clone: 1F9F5) at dilution of 1:800 and CoraLite®488-Conjugated AffiniPure Goat Anti-Mouse IgG(H+L).