

For Research Use Only

ARF1 Monoclonal antibody

Catalog Number: 68069-1-Ig **1 Publications**



Basic Information

Catalog Number: 68069-1-Ig	GenBank Accession Number: BC009247	Purification Method: Protein G purification
Size: 150ul , Concentration: 1000 ug/ml by Nanodrop;	GeneID (NCBI): 375	CloneNo.: 1C10E3
Source: Mouse	UNIPROT ID: P84077	Recommended Dilutions: WB 1:5000-1:50000 IF/ICC 1:400-1:1600
Isotype: IgG1	Full Name: ADP-ribosylation factor 1	
Immunogen Catalog Number: AG28021	Calculated MW: 21 kDa	
	Observed MW: 18-21 kDa	

Applications

Tested Applications: WB, IF/ICC, ELISA	Positive Controls:
Cited Applications: WB, IP	WB : A431 cells, LNCaP cells, HeLa cells, HEK-293 cells, HepG2 cells, pig brain tissue, rabbit brain tissue, rat brain tissue, mouse brain tissue
Species Specificity: human, mouse, rat, pig, rabbit	IF/ICC : HeLa cells,
Cited Species: human	

Background Information

ADP-ribosylation factors (ARFs) are members of the ARF family of GTP-binding proteins of the Ras superfamily. ARFs bind and regulate GTP/GDP cycle by alternating between the active GTP-bound and inactive GDP-bound conformations. ARF family proteins are essential and ubiquitous in eukaryotes. Six highly conserved members of the family have been identified in mammalian cells. They function in vesicular traffic and actin remodelling and other bioprocesses in cells. The ARF1 protein is localized to the Golgi apparatus and has a central role in intra-Golgi transport. It mainly functions in coat recruitment.(PMID: 7759471, PMID: 16042562).

Notable Publications

Author	Pubmed ID	Journal	Application
Jian Zhou	38906140	Cell Metab	WB,IP

Storage

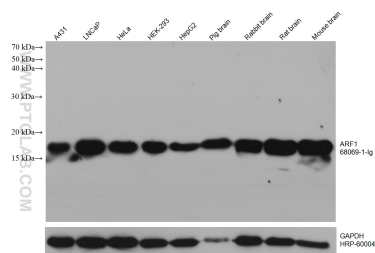
Storage:
Store at -20°C. Stable for one year after shipment.
Storage Buffer:
PBS with 0.02% sodium azide and 50% glycerol pH 7.3.
Aliquoting is unnecessary for -20°C storage

*** 20ul sizes contain 0.1% BSA

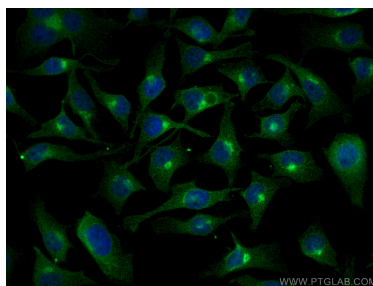
For technical support and original validation data for this product please contact:
T: 1 (888) 4PTGLAB (1-888-478-4522) (toll free in USA), or 1(312) 455-8498 (outside USA)
E: proteintech@ptglab.com
W: ptglab.com

This product is exclusively available under Proteintech Group brand and is not available to purchase from any other manufacturer.

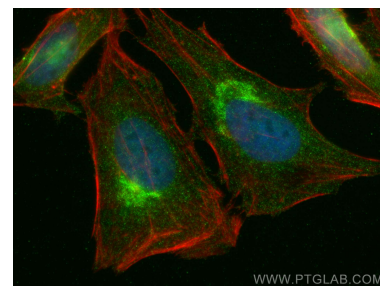
Selected Validation Data



Various lysates were subjected to SDS PAGE followed by western blot with 68069-1-Ig (ARF1 antibody) at dilution of 1:10000 incubated at room temperature for 1.5 hours. The membrane was stripped and reblotted with HRP-conjugated GAPDH Monoclonal antibody (HRP-60004) as loading control.



Immunofluorescent analysis of (4% PFA) fixed HeLa cells using ARF1 antibody (68069-1-Ig, Clone: 1C10E3) at dilution of 1:400 and CoraLite®488-Conjugated Goat Anti-Mouse IgG(H+L).



Immunofluorescent analysis of (4% PFA) fixed HeLa cells using ARF1 antibody (68069-1-Ig, Clone: 1C10E3) at dilution of 1:800 and CoraLite®488-Conjugated Goat Anti-Mouse IgG(H+L), CL594-phalloidin (red).