

BAG3 Monoclonal antibody, PBS Only

Catalog Number: 68076-1-PBS

Basic Information

Catalog Number: 68076-1-PBS	GenBank Accession Number: BC006418	Purification Method: Protein A purification
Size: 100ug , Concentration: 1 mg/ml by Nanodrop;	GeneID (NCBI): 9531	CloneNo.: 4G6C2
Source: Mouse	UNIPROT ID: O95817	
Isotype: IgG1	Full Name: BCL2-associated athanogene 3	
Immunogen Catalog Number: AG17608	Calculated MW: 61 kDa	
	Observed MW: 74 kDa	

Applications

Tested Applications:
WB, IF, ELISA

Species Specificity:
Human, mouse, rabbit, pig, rat

Background Information

BAG3 (Bcl2-associated athanogene 3) belongs to the BAG protein family, the co-chaperone that binds to Hsc70/Hsp70 through the BAG domain and modulates their activity in polypeptide folding. BAG3 contains also a WW domain and a proline-rich (PXXP) repeat, that mediate binding to partners different from Hsp70. Through interacting with different molecular partner, BAG3 influences several cell processes, such as apoptosis, autophagy and cell motility. BAG3 protein has been reported to sustain cell survival, resistance to therapy, and/or motility and metastatization in several tumor types, thus being identified as a potential target for anticancer therapies. In addition, defects in BAG3 are the cause of some myopathy.

Storage

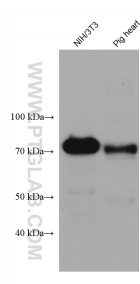
Storage:
Store at -80°C.

Storage Buffer:
PBS only

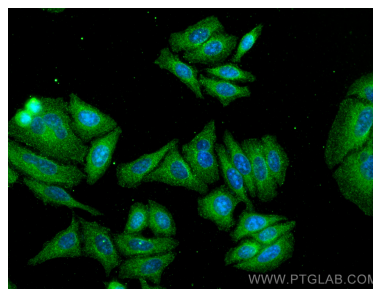
For technical support and original validation data for this product please contact:
T: 1 (888) 4PTGLAB (1-888-478-4522) (toll free in USA), or 1(312) 455-8498 (outside USA)
E: proteintech@ptglab.com
W: ptglab.com

This product is exclusively available under Proteintech Group brand and is not available to purchase from any other manufacturer.

Selected Validation Data



Various lysates were subjected to SDS PAGE followed by western blot with 68076-1-Ig (BAG3 antibody) at dilution of 1:10000 incubated at room temperature for 1.5 hours. This data was developed using the same antibody clone with 68076-1-PBS in a different storage buffer formulation.



Immunofluorescent analysis of (-20°C Methanol) fixed HepG2 cells using BAG3 antibody (68076-1-Ig, Clone: 4G6C2) at dilution of 1:1000 and CoraLite®488-Conjugated AffiniPure Goat Anti-Mouse IgG(H+L). This data was developed using the same antibody clone with 68076-1-PBS in a different storage buffer formulation.