

For Research Use Only

# DPEP1 Monoclonal antibody

Catalog Number: 68081-1-Ig



## Basic Information

Catalog Number: 68081-1-Ig	GenBank Accession Number: BC017023	Purification Method: Protein A purification
Size: 150ul , Concentration: 1000 ug/ml by Nanodrop;	GeneID (NCBI): 1800	CloneNo.: 2B4F4
Source: Mouse	UNIPROT ID: P16444	Recommended Dilutions: WB 1:5000-1:50000 IHC 1:500-1:2000 IF-P 1:200-1:800
Isotype: IgG2a	Full Name: dipeptidase 1 (renal)	
Immunogen Catalog Number: AG14591	Calculated MW: 411 aa, 46 kDa	
	Observed MW: 46 kDa	

## Applications

### Tested Applications:

WB, IHC, IF-P, ELISA

### Species Specificity:

human, mouse, rat, pig, rabbit

**Note-IHC: suggested antigen retrieval with *TE buffer pH 9.0*; (\*) Alternatively, antigen retrieval may be performed with *citrate buffer pH 6.0***

### Positive Controls:

**WB** : human testis tissue, rabbit kidney tissue, pig pancreas tissue, rat pancreas tissue, HepG2 cells

**IHC** : human kidney tissue, human colon cancer tissue

**IF-P** : mouse kidney tissue,

## Storage

### Storage:

Store at -20°C. Stable for one year after shipment.

### Storage Buffer:

PBS with 0.02% sodium azide and 50% glycerol pH 7.3.

Aliquoting is unnecessary for -20°C storage

\*\*\* 20ul sizes contain 0.1% BSA

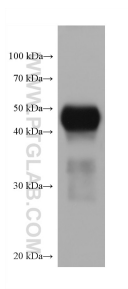
For technical support and original validation data for this product please contact:

T: 1 (888) 4PTGLAB (1-888-478-4522) (toll free in USA), or 1(312) 455-8498 (outside USA)

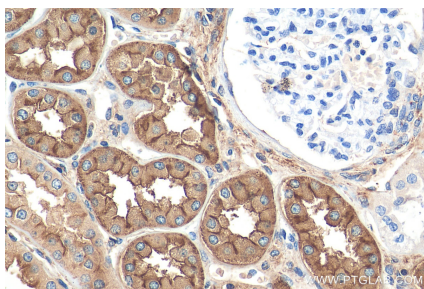
E: [proteintech@ptglab.com](mailto:proteintech@ptglab.com)  
W: [ptglab.com](http://ptglab.com)

This product is exclusively available under Proteintech Group brand and is not available to purchase from any other manufacturer.

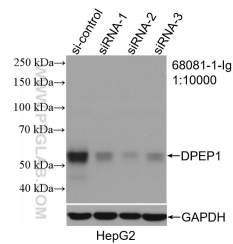
Selected Validation Data



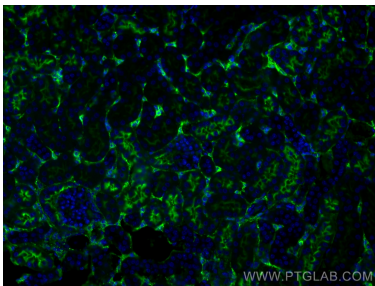
human testis tissue were subjected to SDS PAGE followed by western blot with 68081-1-Ig (DPEP1 antibody) at dilution of 1:10000 incubated at room temperature for 1.5 hours.



Immunohistochemical analysis of paraffin-embedded human kidney tissue slide using 68081-1-Ig (DPEP1 antibody) at dilution of 1:1000 (under 40x lens). Heat mediated antigen retrieval with Tris-EDTA buffer (pH 9.0).



WB result of DPEP1 antibody (68081-1-Ig; 1:10000; incubated at room temperature for 1.5 hours) with sh-Control and sh-DPEP1 transfected HepG2 cells.



Immunofluorescent analysis of (4% PFA) fixed mouse kidney tissue using DPEP1 antibody (68081-1-Ig, Clone: 2B4F4 ) at dilution of 1:400 and CoraLite®488-Conjugated AffiniPure Goat Anti-Mouse IgG(H+L).