

For Research Use Only

PYCRL Monoclonal antibody

Catalog Number: 68087-1-Ig



Basic Information

Catalog Number: 68087-1-Ig	GenBank Accession Number: BC007993	Purification Method: Protein G purification
Size: 150ul , Concentration: 1000 ug/ml by Nanodrop;	GeneID (NCBI): 65263	CloneNo.: 1G7A3
Source: Mouse	UNIPROT ID: Q53H96	Recommended Dilutions: WB 1:2000-1:10000
Isotype: IgG1	Full Name: pyrroline-5-carboxylate reductase-like	
Immunogen Catalog Number: AG31938	Calculated MW: 274 aa, 29 kDa	
	Observed MW: 26-29 kDa	

Applications

Tested Applications: WB, ELISA	Positive Controls: WB : HeLa cells, rabbit kidney tissue, HEK293 cells, LNCaP cells, MCF-7 cells, U2OS cells
Species Specificity: Human, Rabbit	

Notable Publications

Author	Pubmed ID	Journal	Application
Tina Becirovic	39075050	Cell Death Discov	WB

Storage

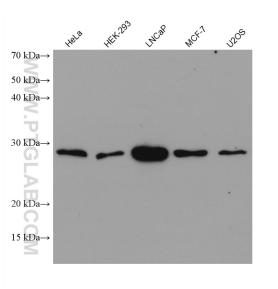
Storage:
Store at -20°C. Stable for one year after shipment.
Storage Buffer:
PBS with 0.02% sodium azide and 50% glycerol pH 7.3.
Aliquoting is unnecessary for -20°C storage

*** 20ul sizes contain 0.1% BSA

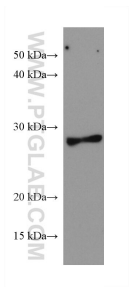
For technical support and original validation data for this product please contact:
T: 1 (888) 4PTGLAB (1-888-478-4522) (toll free in USA), or 1(312) 455-8498 (outside USA)
E: proteintech@ptglab.com
W: ptglab.com

This product is exclusively available under Proteintech Group brand and is not available to purchase from any other manufacturer.

Selected Validation Data



Various lysates were subjected to SDS PAGE followed by western blot with 68087-1-Ig (PYCRL antibody) at dilution of 1:5000 incubated at room temperature for 1.5 hours.



rabbit kidney tissue were subjected to SDS PAGE followed by western blot with 68087-1-Ig (PYCRL antibody) at dilution of 1:5000 incubated at room temperature for 1.5 hours.