

For Research Use Only

mCherry Monoclonal antibody

Catalog Number: 68088-1-Ig **3 Publications**



Basic Information

Catalog Number: 68088-1-Ig	GenBank Accession Number: GeneID (NCBI):	Purification Method: Protein A purification
Size: 150ul , Concentration: 1000 ug/ml by Nanodrop;	Full Name: Calculated MW: 27 kDa	CloneNo.: 1B3C6
Source: Mouse		Recommended Dilutions: WB 1:2000-1:10000 IF/ICC 1:400-1:1600
Isotype: IgG1		
Immunogen Catalog Number: AG25320		

Applications

Tested Applications: WB, IF/ICC, ELISA	Positive Controls:
Cited Applications: WB, IF, IP, ColP	WB : Transfected HEK-293 cells,
Species Specificity: recombinant protein	IF/ICC : Transfected HEK-293 cells,
Cited Species: human, pig	

Background Information

mCherry is a fluorophore (a fluorescent protein) used in biotechnology as a tracer to follow the flow of fluids, as a marker when tagged to molecules and cell components. mCherry is the second generation monomeric red fluorescent protein that have improved brightness and photostability. mCherry and the majority of red fluorescent proteins derive from a protein isolated from *Discosoma* sp. mCherry is a monomeric fluorescent construct with peak absorption/emission at 587 nm and 610 nm, respectively.

Notable Publications

Author	Pubmed ID	Journal	Application
Xuemeng Shi	39601593	J Virol	WB
Miranda Bueno-Arribas	37989223	Open Biol	ColP
Jia Luo	37660925	J Biol Chem	WB,IF,IP

Storage

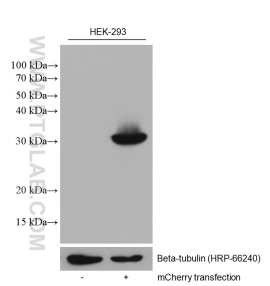
Storage:
Store at -20°C. Stable for one year after shipment.
Storage Buffer:
PBS with 0.02% sodium azide and 50% glycerol pH 7.3.
Aliquoting is unnecessary for -20°C storage

*** 20ul sizes contain 0.1% BSA

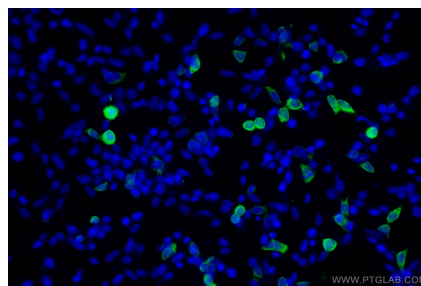
For technical support and original validation data for this product please contact:
T: 1 (888) 4PTGLAB (1-888-478-4522) (toll free in USA), or 1(312) 455-8498 (outside USA)
E: proteintech@ptglab.com
W: ptglab.com

This product is exclusively available under Proteintech Group brand and is not available to purchase from any other manufacturer.

Selected Validation Data



Non-transfected and transfected HEK-293 lysates were subjected to SDS PAGE followed by western blot with 68088-1-Ig (mCherry antibody) at dilution of 1:5000 incubated at room temperature for 1.5 hours.



Immunofluorescent analysis of (-20°C Ethanol) fixed Transfected HEK-293 cells using mCherry antibody (68088-1-Ig, Clone: 1B3C6) at dilution of 1:800 and CoraLite®488-Conjugated Goat Anti-Mouse IgG(H+L) (SA00013-1).