

For Research Use Only

# mCherry Monoclonal antibody, PBS Only



Catalog Number: 68088-1-PBS

## Basic Information

Catalog Number:

68088-1-PBS

Size:

100ug , Concentration: 1mg/ml by Nanodrop;

Source:

Mouse

Isotype:

IgG1

Immunogen Catalog Number:

AG25320

GenBank Accession Number:

GeneID (NCBI):

Full Name:

Calculated MW:

27 kDa

Purification Method:

Protein A purification

CloneNo.:

1B3C6

## Applications

Tested Applications:

WB, IF, ELISA

Species Specificity:

recombinant protein

## Background Information

mCherry is a fluorophore (a fluorescent protein) used in biotechnology as a tracer to follow the flow of fluids, as a marker when tagged to molecules and cell components. mCherry is the second generation monomeric red fluorescent protein that have improved brightness and photostability. mCherry and the majority of red fluorescent proteins derive from a protein isolated from *Discosoma* sp. mCherry is a monomeric fluorescent construct with peak absorption/emission at 587 nm and 610 nm, respectively.

## Storage

Storage:

Store at -80°C.

Storage Buffer:

PBS Only

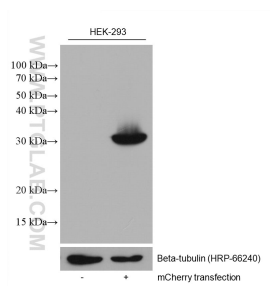
For technical support and original validation data for this product please contact:

T: 1 (888) 4PTGLAB (1-888-478-4522) (toll free in USA), or 1(312) 455-8498 (outside USA)

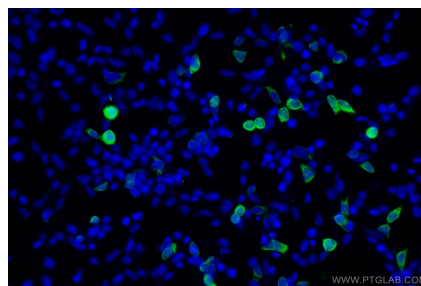
E: [proteintech@ptglab.com](mailto:proteintech@ptglab.com)  
W: [ptglab.com](http://ptglab.com)

This product is exclusively available under Proteintech Group brand and is not available to purchase from any other manufacturer.

## Selected Validation Data



Non-transfected and transfected HEK-293 lysates were subjected to SDS PAGE followed by western blot with 68088-1-Ig (mCherry antibody) at dilution of 1:5000 incubated at room temperature for 1.5 hours. This data was developed using the same antibody clone with 68088-1-PBS in a different storage buffer formulation.



Immunofluorescent analysis of (-20°C Ethanol) fixed Transfected HEK-293 cells using mCherry antibody (68088-1-Ig, Clone: 1B3C6) at dilution of 1:800 and CoraLite® 488-Conjugated AffiniPure Goat Anti-Mouse IgG(H+L) (SA00013-1). This data was developed using the same antibody clone with 68088-1-PBS in a different storage buffer formulation.