

For Research Use Only

Annexin A11 Monoclonal antibody

Catalog Number: 68089-1-Ig **2 Publications**



Basic Information

Catalog Number: 68089-1-Ig	GenBank Accession Number: BC007564	Purification Method: Protein A purification
Size: 150ul , Concentration: 1000 ug/ml by Nanodrop;	GeneID (NCBI): 311	CloneNo.: 1A3C4
Source: Mouse	UNIPROT ID: P50995	Recommended Dilutions: WB 1:5000-1:50000 IHC 1:500-1:2000 IF/ICC 1:200-1:800
Isotype: IgG1	Full Name: annexin A11	
Immunogen Catalog Number: AG31839	Calculated MW: 56 kDa	
	Observed MW: 56 kDa	

Applications

Tested Applications: WB, IHC, IF/ICC, FC (Intra), ELISA	Positive Controls:
Cited Applications: WB, IHC	WB : A431 cells, A549 cells, HeLa cells, Jurkat cells, K-562 cells, HSC-T6 cells, NIH/3T3 cells, pig heart tissue, rabbit heart
Species Specificity: human, mouse, rat, pig, rabbit	IHC : human lung cancer tissue, human ovary tumor tissue
Cited Species: human, mouse	IF/ICC : HeLa cells,
Note-IHC: suggested antigen retrieval with TE buffer pH 9.0; (*) Alternatively, antigen retrieval may be performed with citrate buffer pH 6.0	

Background Information

Annexin A11 (Anxa11) is one member of annexins that are Ca²⁺-regulated phospholipid-binding proteins. Annexin A11 plays an important role in cell division, differentiation, apoptosis, vesicle trafficking and Ca²⁺ signaling (PMID: 31610865). ANXA11, an RNA granule-associated phosphoinositide-binding protein, acts as a molecular tether between RNA granules and lysosomes (PMID: 31539493). Annexin A11 dysregulation is involved in the progression, drug-resistance, recurrence of systemic autoimmune disease and cancer. Annexin A11, is involved in a variety of cellular functions including mRNA transport and translation, endocytosis, exocytosis, and plasma membrane repair (PMID: 38896345).

Notable Publications

Author	Pubmed ID	Journal	Application
John L Robinson	38896345	Acta Neuropathol	WB,IHC
Sara Emad El-Agamy	37739344	Mol Cell Proteomics	WB

Storage

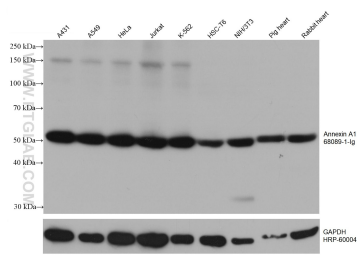
Storage:
Store at -20°C. Stable for one year after shipment.
Storage Buffer:
PBS with 0.02% sodium azide and 50% glycerol pH 7.3.
Aliquoting is unnecessary for -20°C storage

*** 20ul sizes contain 0.1% BSA

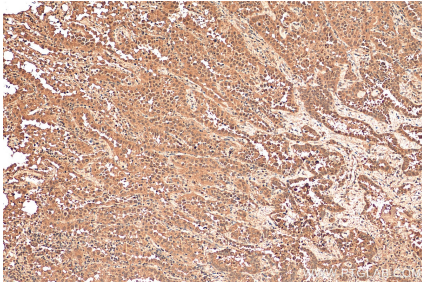
For technical support and original validation data for this product please contact:
T: 1 (888) 4PTGLAB (1-888-478-4522) (toll free in USA), or 1(312) 455-8498 (outside USA)
E: proteintech@ptglab.com
W: ptglab.com

This product is exclusively available under Proteintech Group brand and is not available to purchase from any other manufacturer.

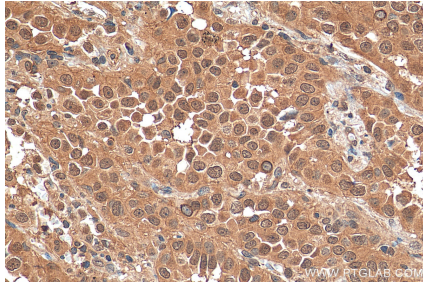
Selected Validation Data



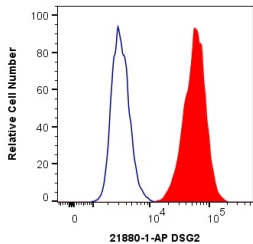
Various lysates were subjected to SDS PAGE followed by western blot with 68089-1-Ig (Annexin A11 antibody) at dilution of 1:20000 incubated at room temperature for 1.5 hours. The membrane was stripped and reblotted with HRP-conjugated GAPDH Monoclonal antibody (HRP-60004) as loading control.



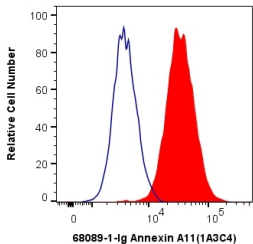
Immunohistochemical analysis of paraffin-embedded human lung cancer tissue slide using 68089-1-Ig (Annexin A11 antibody) at dilution of 1:1000 (under 10x lens). Heat mediated antigen retrieval with Tris-EDTA buffer (pH 9.0).



Immunohistochemical analysis of paraffin-embedded human lung cancer tissue slide using 68089-1-Ig (Annexin A11 antibody) at dilution of 1:1000 (under 40x lens). Heat mediated antigen retrieval with Tris-EDTA buffer (pH 9.0).



1X10⁶ HEK-293T cells were intracellularly stained with 0.4 ug Anti-Human Annexin A11 (68089-1-Ig, Clone:1A3C4) and CoraLite®488-Conjugated AffiniPure Goat Anti-Mouse IgG(H+L) at dilution 1:1000 (red), or 0.4 ug Mouse IgG1 Isotype Control (MOPC-21) (65124-1-Ig, Clone: MOPC-21) (blue). Cells were fixed with 4% PFA and permeabilized with Flow Cytometry Perm Buffer (PF00011-C).



1X10⁶ HeLa cells were intracellularly stained with 0.4 ug Anti-Human Annexin A11 (68089-1-Ig, Clone:1A3C4) and CoraLite®488-Conjugated AffiniPure Goat Anti-Mouse IgG(H+L) at dilution 1:1000 (red), or 0.4 ug Mouse IgG1 Isotype Control (MOPC-21) (65124-1-Ig, Clone: MOPC-21) (blue). Cells were fixed with 4% PFA and permeabilized with Flow Cytometry Perm Buffer (PF00011-C).



Immunofluorescent analysis of (-20°C Methanol) fixed HeLa cells using Annexin A11 antibody (68089-1-Ig, Clone: 1A3C4) at dilution of 1:200 and CoraLite®488-Conjugated AffiniPure Goat Anti-Mouse IgG(H+L).