

# MIST1 Monoclonal antibody, PBS Only

Catalog Number: 68092-1-PBS

## Basic Information

<b>Catalog Number:</b> 68092-1-PBS	<b>GenBank Accession Number:</b> BC113394	<b>Purification Method:</b> Protein A purification
<b>Size:</b> 100ug , Concentration: 1 mg/ml by Nanodrop;	<b>GeneID (NCBI):</b> 168620	<b>CloneNo.:</b> 1E10B3
<b>Source:</b> Mouse	<b>UNIPROT ID:</b> Q7RTS1	
<b>Isotype:</b> IgG2a	<b>Full Name:</b> basic helix-loop-helix family, member a15	
<b>Immunogen Catalog Number:</b> AG18509	<b>Calculated MW:</b> 189 aa, 21 kDa	
	<b>Observed MW:</b> 27 kDa	

## Applications

**Tested Applications:**  
WB, Indirect ELISA

**Species Specificity:**  
Human, Pig, Rat , Mouse

## Background Information

Muscle intestine stomach expression 1 (MIST1), also named bHLHa15, is a secretory cell transcription factor that belongs to the basic helix-loop-helix superfamily. MIST1 is mainly expressed in serous secreted cells and essential for the development and maturation of secretory cells. Secretory cells lacking MIST1 exhibit structural and functional defects, including alterations in cytoskeletal organization and cell polarity and improper cell-cell junction. In healthy pancreata, MIST1 facilitates cell-to-cell communication, promotes acinar cell polarity, controls Ca<sup>2+</sup> flux, promotes unfolded protein response (UPR) homeostasis, aids in vesicle assembly, and is required for regulated exocytosis. MIST1 was downregulated in pancreatic cancer tissues compared with normal or adjacent pancreatic tissues and lower MIST1 expression in pancreatic cancer cell lines than normal acinar cells (BxPC-3, PANC-1, SW 1990) (PMID:29859299). MIST1 is downregulated in the development of gastric cancer and in gastric cancer cells compared with SW620 cells (PMID:34149921).

## Storage

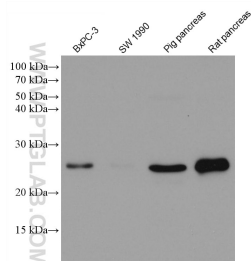
**Storage:**  
Store at -80°C.

**Storage Buffer:**  
PBS Only

For technical support and original validation data for this product please contact:  
T: 1 (888) 4PTGLAB (1-888-478-4522) (toll free in USA), or 1(312) 455-8498 (outside USA)  
E: [proteintech@ptglab.com](mailto:proteintech@ptglab.com)  
W: [ptglab.com](http://ptglab.com)

This product is exclusively available under Proteintech Group brand and is not available to purchase from any other manufacturer.

## Selected Validation Data



Various lysates were subjected to SDS PAGE followed by western blot with 68092-1-Ig (MIST1 antibody) at dilution of 1:5000 incubated at room temperature for 1.5 hours. This data was developed using the same antibody clone with 68092-1-PBS in a different storage buffer formulation.