

For Research Use Only

SPTLC2 Monoclonal antibody

Catalog Number: 68094-1-Ig **Featured Product**



Basic Information

Catalog Number: 68094-1-Ig	GenBank Accession Number: BC005123	Purification Method: Protein G purification
Size: 150ul , Concentration: 1000 µg/ml by Nanodrop;	GeneID (NCBI): 9517	CloneNo.: 2G6A12
Source: Mouse	Full Name: serine palmitoyltransferase, long chain base subunit 2	Recommended Dilutions: WB 1:2000-1:10000
Isotype: IgG1	Calculated MW: 63 kDa	
Immunogen Catalog Number: AG28380	Observed MW: 60 kDa	

Applications

Tested Applications: WB, ELISA	Positive Controls: WB : HeLa cells, HEK-293 cells, Jurkat cells, HepG2 cells, A549 cells, K-562 cells
Species Specificity: Human	

Background Information

Serine palmitoyltransferase long chain base subunit 2 (SPTLC2) is one of the subunits of the heterodimeric molecule Serine palmitoyltransferase (SPT). Sptlc2 deficiency not only affected T cell sphingolipid anabolism but also led to prolonged activation of the mechanistic target of rapamycin complex 1 (PMID: 30952607).

Storage

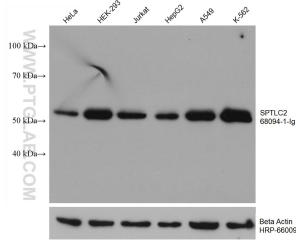
Storage:
Store at -20°C. Stable for one year after shipment.
Storage Buffer:
PBS with 0.02% sodium azide and 50% glycerol pH 7.3.
Aliquoting is unnecessary for -20°C storage

*** 20ul sizes contain 0.1% BSA

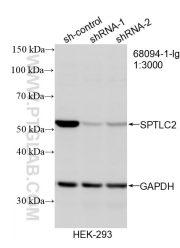
For technical support and original validation data for this product please contact:
T: 1 (888) 4PTGLAB (1-888-478-4522) (toll free in USA), or 1(312) 455-8498 (outside USA) E: proteintech@ptglab.com
W: ptglab.com

This product is exclusively available under Proteintech Group brand and is not available to purchase from any other manufacturer.

Selected Validation Data



Various lysates were subjected to SDS PAGE followed by western blot with 68094-1-Ig (SPTLC2 antibody) at dilution of 1:5000 incubated at room temperature for 1.5 hours. The membrane was stripped and reblotted with HRP-conjugated Beta Actin Monoclonal antibody (HRP-66009) as loading control.



WB result of SPTLC2 antibody (68094-1-Ig; 1:3000; incubated at room temperature for 1.5 hours) with sh-Control and sh-SPTLC2 transfected HEK-293 cells.