

For Research Use Only

SPTLC2 Monoclonal antibody, PBS Only



Catalog Number: 68094-1-PBS

Featured Product

Basic Information

Catalog Number:

68094-1-PBS

Size:

100ug, Concentration: 1 mg/ml by Nanodrop;

Source:

Mouse

Isotype:

IgG1

Immunogen Catalog Number:

AG28380

GenBank Accession Number:

BC005123

GeneID (NCBI):

9517

UNIPROT ID:

O15270

Full Name:

serine palmitoyltransferase, long chain base subunit 2

Calculated MW:

63 kDa

Observed MW:

60 kDa

Purification Method:

Protein G purification

CloneNo.:

2G6A12

Applications

Tested Applications:

WB, Indirect ELISA

Species Specificity:

Human

Background Information

Serine palmitoyltransferase long chain base subunit 2 (SPTLC2) is one of the subunits of the heterodimeric molecule Serine palmitoyltransferase (SPT). Sptlc2 deficiency not only affected T cell sphingolipid anabolism but also led to prolonged activation of the mechanistic target of rapamycin complex 1 (PMID: 30952607).

Storage

Storage:

Store at -80°C.

Storage Buffer:

PBS Only

For technical support and original validation data for this product please contact:

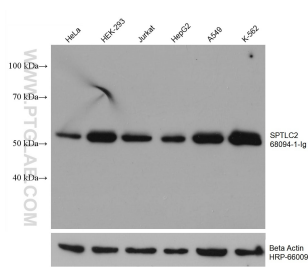
T: 1 (888) 4PTGLAB (1-888-478-4522) (toll free in USA), or 1(312) 455-8498 (outside USA)

E: proteintech@ptglab.com

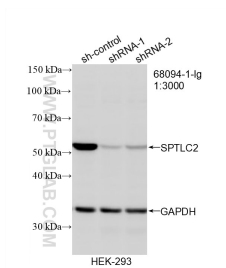
W: ptglab.com

This product is exclusively available under Proteintech Group brand and is not available to purchase from any other manufacturer.

Selected Validation Data



Various lysates were subjected to SDS PAGE followed by western blot with 68094-1-Ig (SPTLC2 antibody) at dilution of 1:5000 incubated at room temperature for 1.5 hours. The membrane was stripped and reblotted with HRP-conjugated Beta Actin Monoclonal antibody (HRP-66009) as loading control. This data was developed using the same antibody clone with 68094-1-PBS in a different storage buffer formulation.



WB result of SPTLC2 antibody (68094-1-Ig; 1:3000; incubated at room temperature for 1.5 hours) with sh-Control and sh-SPTLC2 transfected HEK-293 cells. This data was developed using the same antibody clone with 68094-1-PBS in a different storage buffer formulation.