

For Research Use Only

PRAME Monoclonal antibody, PBS Only (Detector)

Catalog Number: 68097-3-PBS



Basic Information

Catalog Number: 68097-3-PBS	GenBank Accession Number: BC014074	Purification Method: Protein A purification
Size: 100ug, Concentration: 1 mg/ml by Nanodrop;	GeneID (NCBI): 23532	CloneNo.: 2G1H5
Source: Mouse	UNIPROT ID: P78395	
Isotype: IgG2b	Full Name: preferentially expressed antigen in melanoma	
Immunogen Catalog Number: AG1906	Calculated MW: 509 aa, 58 kDa	

Applications

Tested Applications:
Cytometric bead array, Sandwich ELISA, Indirect ELISA, Sample test

Species Specificity:
human

Product Information

68097-3-PBS targets PRAME as part of a matched antibody pair.

MP50344-1: 68097-2-PBS capture and 68097-3-PBS detection (validated in Cytometric bead array, Sandwich ELISA)

Unconjugated mouse monoclonal antibody pair in PBS only (BSA and azide free) storage buffer at a concentration of 1 mg/mL, ready for conjugation.

This conjugation ready format makes antibodies ideal for use in many applications including: ELISAs, multiplex assays requiring matched pairs, mass cytometry, and multiplex imaging applications. Antibody use should be optimized by the end user for each application and assay.

Storage

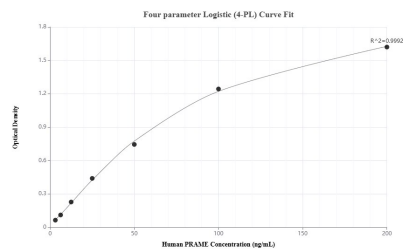
Storage:
Store at -80°C.

Storage Buffer:
PBS Only

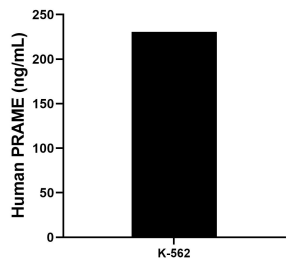
For technical support and original validation data for this product please contact:
T: 1 (888) 4PTGLAB (1-888-478-4522) (toll free in USA), or 1(312) 455-8498 (outside USA)
E: proteintech@ptglab.com
W: ptglab.com

This product is exclusively available under Proteintech Group brand and is not available to purchase from any other manufacturer.

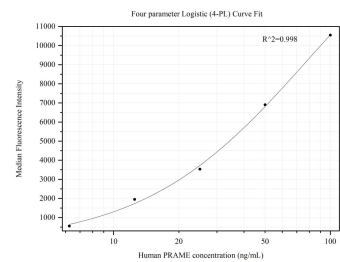
Selected Validation Data



Sandwich ELISA standard curve of MP50344-1, Human PRAME Monoclonal Matched Antibody Pair - PBS only. 68097-2-PBS was coated to a plate as the capture antibody and incubated with serial dilutions of standard Ag1906. 68097-3-PBS was HRP conjugated as the detection antibody. Range: 3.13-200 ng/mL



The mean PRAME concentration was determined to be 230.66 ng/mL in K-562 cell extract based on a 2.5 mg/mL extract load.



Cytometric bead array standard curve of MP50344-1, PRAME Monoclonal Matched Antibody Pair, PBS Only. Capture antibody: 68097-2-PBS. Detection antibody: 68097-3-PBS. Standard: Ag1906. Range: 6.25-100 ng/mL