

For Research Use Only

SLC25A16 Monoclonal antibody

Catalog Number: 68107-1-Ig



Basic Information

Catalog Number:

68107-1-Ig

Size:

150ul, Concentration: 1000 ug/ml by Nanodrop;

Source:

Mouse

Isotype:

IgG1

Immunogen Catalog Number:

AG4891

GenBank Accession Number:

BC030266

GeneID (NCBI):

8034

UNIPROT ID:

P16260

Full Name:

solute carrier family 25 (mitochondrial carrier; Graves disease autoantigen), member 16

Calculated MW:

36 kDa

Observed MW:

33 kDa

Purification Method:

Protein G purification

CloneNo.:

3F10C8

Recommended Dilutions:

WB 1:5000-1:50000

Applications

Tested Applications:

WB, ELISA

Species Specificity:

Human

Positive Controls:

WB : LNCaP cells, HeLa cells, HEK-293 cells, HepG2 cells, Jurkat cells

Background Information

GDA, also named as SLC25A16, GDC, ML7, hML7, belongs to the mitochondrial carrier family. GDA encodes a protein that contains three tandemly repeated mitochondrial carrier protein domains. The encoded protein is localized in the mitochondrion inner membrane and facilitates the rapid transport and exchange of molecules between the cytosol and the mitochondrial matrix space. This gene has been associated with Graves' disease (PMID:11158296, 1457817).

Storage

Storage:

Store at -20°C. Stable for one year after shipment.

Storage Buffer:

PBS with 0.02% sodium azide and 50% glycerol pH 7.3.

Aliquoting is unnecessary for -20°C storage

*** 20ul sizes contain 0.1% BSA

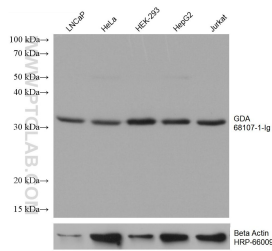
For technical support and original validation data for this product please contact:

T: 1 (888) 4PTGLAB (1-888-478-4522) (toll free in USA), or 1(312) 455-8498 (outside USA)

E: proteintech@ptglab.com
W: ptglab.com

This product is exclusively available under Proteintech Group brand and is not available to purchase from any other manufacturer.

Selected Validation Data



Various lysates were subjected to SDS PAGE followed by western blot with 68107-1-Ig (GDA antibody) at dilution of 1:10000 incubated at room temperature for 1.5 hours. The membrane was stripped and reblotted with HRP-conjugated Beta Actin Monoclonal antibody (HRP-66009) as loading control.