

For Research Use Only

RPL12 Monoclonal antibody

Catalog Number: 68110-1-Ig



Basic Information

Catalog Number: 68110-1-Ig	GenBank Accession Number: BC050644	Purification Method: Protein G purification
Size: 150ul , Concentration: 1000 µg/ml by Nanodrop;	GeneID (NCBI): 6136	CloneNo.: 2C9B3
Source: Mouse	Full Name: ribosomal protein L12	Recommended Dilutions: WB 1:20000-1:100000
Isotype: IgG1	Calculated MW: 18 kDa	
Immunogen Catalog Number: AG6580	Observed MW: 21 kDa	

Applications

Tested Applications:
WB, ELISA

Species Specificity:
Human, mouse, rat

Positive Controls:

WB : LNCaP cells, HeLa cells, HepG2 cells, Jurkat cells, K-562 cells, HSC-T6 cells, NIH/3T3 cells

Background Information

Storage

Storage:
Store at -20°C. Stable for one year after shipment.

Storage Buffer:
PBS with 0.02% sodium azide and 50% glycerol pH 7.3.

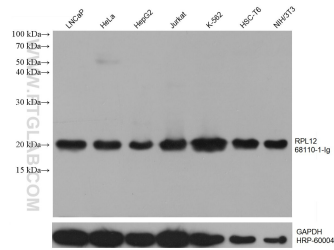
Aliquoting is unnecessary for -20°C storage

*** 20ul sizes contain 0.1% BSA

For technical support and original validation data for this product please contact:
T: 1 (888) 4PTGLAB (1-888-478-4522) (toll free in USA), or 1(312) 455-8498 (outside USA) E: proteintech@ptglab.com W: ptglab.com

This product is exclusively available under Proteintech Group brand and is not available to purchase from any other manufacturer.

Selected Validation Data



Various lysates were subjected to SDS PAGE followed by western blot with 68110-1-ig (RPL12 antibody) at dilution of 1:100000 incubated at room temperature for 1.5 hours. The membrane was stripped and reblotted with HRP-conjugated GAPDH Monoclonal antibody (HRP-60004) as loading control.