

For Research Use Only

# RPL12 Monoclonal antibody

Catalog Number: 68110-1-Ig



## Basic Information

Catalog Number: 68110-1-Ig	GenBank Accession Number: BC050644	Purification Method: Protein G purification
Size: 150ul , Concentration: 1000 ug/ml by Nanodrop;	GeneID (NCBI): 6136	CloneNo.: 2C9B3
Source: Mouse	UNIPROT ID: P30050	Recommended Dilutions: WB 1:20000-1:100000 IHC 1:8000-1:32000
Isotype: IgG1	Full Name: ribosomal protein L12	
Immunogen Catalog Number: AG6580	Calculated MW: 18 kDa	
	Observed MW: 21 kDa	

## Applications

### Tested Applications:

WB, IHC, ELISA

### Species Specificity:

human, mouse, rat

**Note-IHC: suggested antigen retrieval with *TE buffer pH 9.0*; (\*) Alternatively, antigen retrieval may be performed with *citrate buffer pH 6.0***

### Positive Controls:

**WB** : LNCaP cells, HeLa cells, HepG2 cells, Jurkat cells, K-562 cells, HSC-T6 cells, NIH/3T3 cells

**IHC** : mouse brain tissue, human endometrial cancer tissue, human placenta tissue, mouse stomach tissue, rat brain tissue, rat stomach tissue

## Storage

### Storage:

Store at -20°C. Stable for one year after shipment.

### Storage Buffer:

PBS with 0.02% sodium azide and 50% glycerol pH 7.3.

Aliquoting is unnecessary for -20°C storage

\*\*\* 20ul sizes contain 0.1% BSA

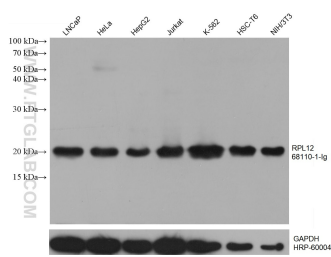
For technical support and original validation data for this product please contact:

T: 1 (888) 4PTGLAB (1-888-478-4522) (toll free in USA), or 1(312) 455-8498 (outside USA)

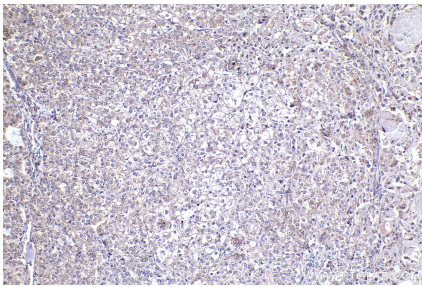
E: [proteintech@ptglab.com](mailto:proteintech@ptglab.com)  
W: [ptglab.com](http://ptglab.com)

This product is exclusively available under Proteintech Group brand and is not available to purchase from any other manufacturer.

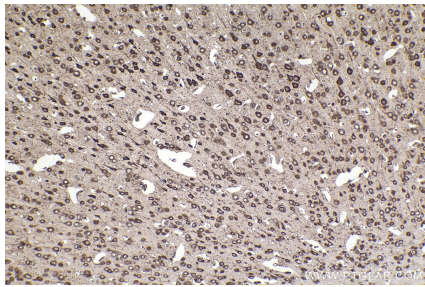
Selected Validation Data



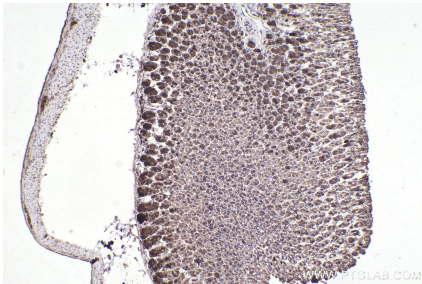
Various lysates were subjected to SDS PAGE followed by western blot with 68110-1-Ig (RPL12 antibody) at dilution of 1:100000 incubated at room temperature for 1.5 hours. The membrane was stripped and reblotted with HRP-conjugated GAPDH Monoclonal antibody (HRP-60004) as loading control.



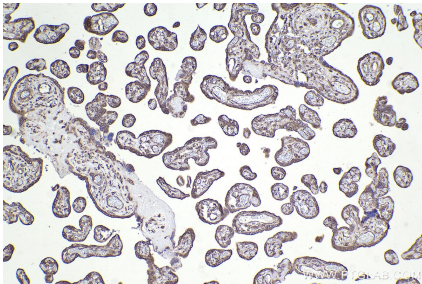
Immunohistochemical analysis of paraffin-embedded human endometrial cancer tissue slide using 68110-1-Ig (RPL12 antibody) at dilution of 1:16000 (under 10x lens). Heat mediated antigen retrieval with Tris-EDTA buffer (pH 9.0).



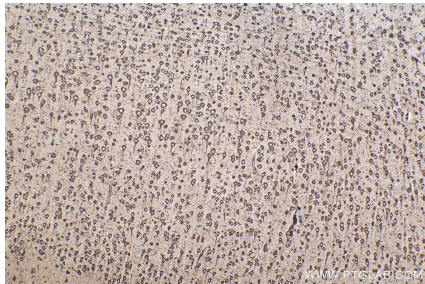
Immunohistochemical analysis of paraffin-embedded mouse brain tissue slide using 68110-1-Ig (RPL12 antibody) at dilution of 1:16000 (under 10x lens). Heat mediated antigen retrieval with Tris-EDTA buffer (pH 9.0).



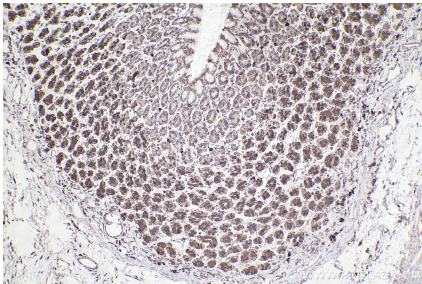
Immunohistochemical analysis of paraffin-embedded mouse stomach tissue slide using 68110-1-Ig (RPL12 antibody) at dilution of 1:16000 (under 10x lens). Heat mediated antigen retrieval with Tris-EDTA buffer (pH 9.0).



Immunohistochemical analysis of paraffin-embedded human placenta tissue slide using 68110-1-Ig (RPL12 antibody) at dilution of 1:32000 (under 10x lens). Heat mediated antigen retrieval with Tris-EDTA buffer (pH 9.0).



Immunohistochemical analysis of paraffin-embedded rat brain tissue slide using 68110-1-Ig (RPL12 antibody) at dilution of 1:16000 (under 10x lens). Heat mediated antigen retrieval with Tris-EDTA buffer (pH 9.0).



Immunohistochemical analysis of paraffin-embedded rat stomach tissue slide using 68110-1-Ig (RPL12 antibody) at dilution of 1:16000 (under 10x lens). Heat mediated antigen retrieval with Tris-EDTA buffer (pH 9.0).