

For Research Use Only

# ADAM8 Monoclonal antibody, PBS Only (Capture)

Catalog Number: 68113-2-PBS



## Basic Information

<b>Catalog Number:</b> 68113-2-PBS	<b>GenBank Accession Number:</b> BC115404	<b>Purification Method:</b> Protein G purification
<b>Size:</b> 100ug , Concentration: 1mg/ml by Nanodrop;	<b>GeneID (NCBI):</b> 101	<b>CloneNo.:</b> 1G2F8
<b>Source:</b> Mouse	<b>UNIPROT ID:</b> P78325	<b>Affinity:</b> $K_D = 1.69 \times 10^{-10}M$
<b>Isotype:</b> IgG1	<b>Full Name:</b> ADAM metallopeptidase domain 8	$K_{off} = 5.61 \times 10^{-6}M$
<b>Immunogen Catalog Number:</b> AG17262	<b>Calculated MW:</b> 824 aa, 89 kDa	$K_{on} = 3.32 \times 10^4M$

## Applications

**Tested Applications:**  
Cytometric bead array, Sandwich ELISA, Indirect ELISA, Sample test

**Species Specificity:**  
human

## Product Information

68113-2-PBS targets ADAM8 as part of a matched antibody pair:

MP50122-1: 68113-2-PBS capture and 68113-3-PBS detection (validated in Cytometric bead array, Sandwich ELISA)

Unconjugated mouse monoclonal antibody pair in PBS only (BSA and azide free) storage buffer at a concentration of 1 mg/mL, ready for conjugation.

This conjugation ready format makes antibodies ideal for use in many applications including: ELISAs, multiplex assays requiring matched pairs, mass cytometry, and multiplex imaging applications. Antibody use should be optimized by the end user for each application and assay.

## Storage

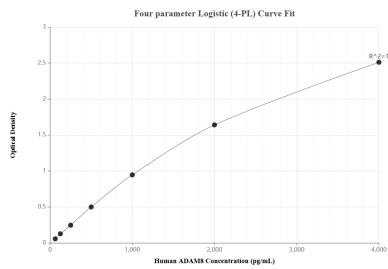
**Storage:**  
Store at -80°C.

**Storage Buffer:**  
PBS only, pH7.3

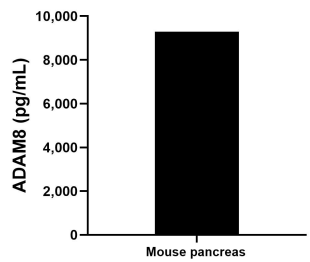
For technical support and original validation data for this product please contact:  
T: 1 (888) 4PTGLAB (1-888-478-4522) (toll free in USA), or 1(312) 455-8498 (outside USA)  
E: [proteintech@ptglab.com](mailto:proteintech@ptglab.com)  
W: [ptglab.com](http://ptglab.com)

This product is exclusively available under Proteintech Group brand and is not available to purchase from any other manufacturer.

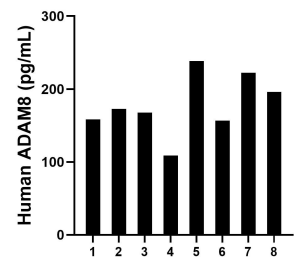
## Selected Validation Data



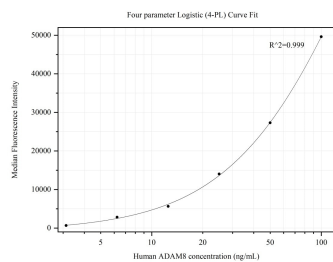
Sandwich ELISA standard curve of MP50122-1, Human ADAM8 Monoclonal Matched Antibody Pair - PBS only. 68113-2-PBS was coated to a plate as the capture antibody and incubated with serial dilutions of standard Ag17262. 68113-3-PBS was HRP conjugated as the detection antibody. Range: 62.5-4000 pg/mL



The mean ADAM8 concentration was determined to be 9,287.6 pg/mL in mouse pancreas tissue extract based on a 2.3 mg/mL extract load.



Serum of eight individual healthy human donors was measured. The ADAM8 concentration of detected samples was determined to be 177.6 pg/mL with a range of 108.9-238.5 pg/mL



Cytometric bead array standard curve of MP50122-1, ADAM8 Monoclonal Matched Antibody Pair, PBS Only. Capture antibody: 68113-2-PBS. Detection antibody: 68113-3-PBS. Standard:Ag17262. Range: 3.125-100 ng/mL