

For Research Use Only

DCT Monoclonal antibody

Catalog Number: 68114-1-Ig



Basic Information

Catalog Number: 68114-1-Ig	GenBank Accession Number: BC028311	Purification Method: Protein G purification
Size: 150ul , Concentration: 1000 µg/ml by Nanodrop;	GeneID (NCBI): 1638	CloneNo.: 1B3D4
Source: Mouse	Full Name: dopachrome tautomerase (dopachrome delta-isomerase, tyrosine-related protein 2)	Recommended Dilutions: WB 1:1000-1:4000 IF 1:200-1:800
Isotype: IgG1	Calculated MW: 519 aa, 59 kDa	
Immunogen Catalog Number: AG26165	Observed MW: 55-63 kDa	

Applications

Tested Applications: IF, WB, ELISA	Positive Controls:
Species Specificity: Human, Mouse, Pig	WB : A375 cells, HL-60 cells, pig skin tissue, mouse skin tissue, mouse testis tissue
	IF : A549 cells,

Background Information

DCT(L-dopachrome Delta-isomerase) is also named as TYRP2,TRP2 and belongs to the tyrosinase family.human TYRP2 protein has 83% identity and 90% similarity to the mouse sequence and has all the structural characteristics of the tyrosinase protein family, including a signal peptide, 15 conserved cysteine residues, 2 copper-binding domains, and a C-terminal membrane-spanning region(PMID:8206391).

Storage

Storage:
Store at -20°C. Stable for one year after shipment.
Storage Buffer:
PBS with 0.02% sodium azide and 50% glycerol pH 7.3.
Aliquoting is unnecessary for -20°C storage

*** 20ul sizes contain 0.1% BSA

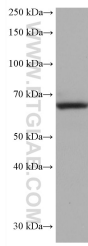
For technical support and original validation data for this product please contact:

T: 1 (888) 4PTGLAB (1-888-478-4522) (toll free in USA), or 1(312) 455-8498 (outside USA)

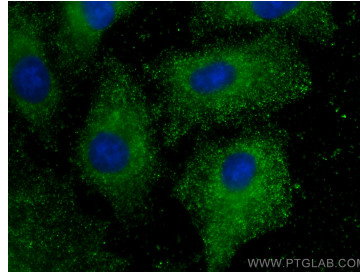
E: proteintech@ptglab.com
W: ptglab.com

This product is exclusively available under Proteintech Group brand and is not available to purchase from any other manufacturer.

Selected Validation Data



A375 cells were subjected to SDS PAGE followed by western blot with 68114-1-Ig (DCT antibody) at dilution of 1:2000 incubated at room temperature for 1.5 hours.



Immunofluorescent analysis of (-20°C Methanol) fixed A549 cells using DCT antibody (68114-1-Ig, Clone: 1B3D4) at dilution of 1:400 and CoraLite® 488-Conjugated AffiniPure Goat Anti-Mouse IgG(H+L).