

For Research Use Only

# DCT Monoclonal antibody, PBS Only

Catalog Number: 68114-1-PBS



## Basic Information

**Catalog Number:**

68114-1-PBS

**Size:**

100ug , Concentration: 1 mg/ml by Nanodrop;

**Source:**

Mouse

**Isotype:**

IgG1

**Immunogen Catalog Number:**

AG26165

**GenBank Accession Number:**

BC028311

**GeneID (NCBI):**

1638

**UNIPROT ID:**

P40126

**Full Name:**

dopachrome tautomerase  
(dopachrome delta-isomerase,  
tyrosine-related protein 2)

**Calculated MW:**

519 aa, 59 kDa

**Observed MW:**

55-63 kDa

**Purification Method:**

Protein A purification

**CloneNo.:**

1B3D4

## Applications

**Tested Applications:**

WB, IF, Indirect ELISA

**Species Specificity:**

Human, Mouse, Pig

## Background Information

DCT(L-dopachrome Delta-isomerase) is also named as TYRP2,TRP2 and belongs to the tyrosinase family.human TYRP2 protein has 83% identity and 90% similarity to the mouse sequence and has all the structural characteristics of the tyrosinase protein family, including a signal peptide, 15 conserved cysteine residues, 2 copper-binding domains, and a C-terminal membrane-spanning region(PMID:8206391).

## Storage

**Storage:**

Store at -80°C.

**Storage Buffer:**

PBS Only

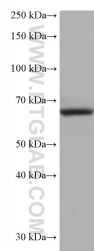
For technical support and original validation data for this product please contact:

T: 1 (888) 4PTGLAB (1-888-478-4522) (toll free in USA), or 1(312) 455-8498 (outside USA)

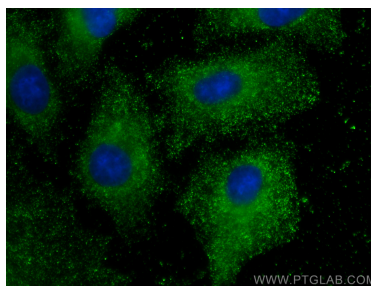
E: [proteintech@ptglab.com](mailto:proteintech@ptglab.com)  
W: [ptglab.com](http://ptglab.com)

This product is exclusively available under Proteintech Group brand and is not available to purchase from any other manufacturer.

## Selected Validation Data



A375 cells were subjected to SDS PAGE followed by western blot with 68114-1-Ig (DCT antibody) at dilution of 1:2000 incubated at room temperature for 1.5 hours. This data was developed using the same antibody clone with 68114-1-PBS in a different storage buffer formulation.



Immunofluorescent analysis of (-20°C Methanol) fixed A549 cells using DCT antibody (68114-1-Ig, Clone: 1B3D4 ) at dilution of 1:400 and CoraLite®488-Conjugated AffiniPure Goat Anti-Mouse IgG(H+L). This data was developed using the same antibody clone with 68114-1-PBS in a different storage buffer formulation.