

For Research Use Only

ME1 Monoclonal antibody

Catalog Number: 68117-1-Ig **1 Publications**



Basic Information

Catalog Number: 68117-1-Ig	GenBank Accession Number: BC025246	Purification Method: Protein A purification
Size: 150ul , Concentration: 1000 ug/ml by Nanodrop;	GeneID (NCBI): 4199	CloneNo.: 2G9G9
Source: Mouse	UNIPROT ID: P48163	Recommended Dilutions: WB 1:5000-1:50000 IF/ICC 1:400-1:1600
Isotype: IgG2a	Full Name: malic enzyme 1, NADP(+)-dependent, cytosolic	
Immunogen Catalog Number: AG9916	Calculated MW: 572 aa, 64 kDa	
	Observed MW: 55-64 kDa	

Applications

Tested Applications: WB, IF/ICC, FC (Intra), ELISA	Positive Controls:
Cited Applications: WB	WB : A549 cells, pig brain tissue, HCT 116 cells, LNCaP cells, HeLa cells, rabbit brain tissue, rat brain tissue, mouse brain tissue
Species Specificity: human, mouse, rat, pig, rabbit	IF/ICC : HepG2 cells,
Cited Species: human	

Background Information

ME1(NADP-dependent malic enzyme) belongs to the malic enzymes family. This malic enzyme catalyzes the reversible oxidative decarboxylation of malate and is a link between the glycolytic pathway and the citric acid cycle. The reaction is L-malate plus NADP(+) to form pyruvate, CO(2), and NADPH.

Notable Publications

Author	Pubmed ID	Journal	Application
Chang Zhang	39610460	Ther Adv Hematol	WB

Storage

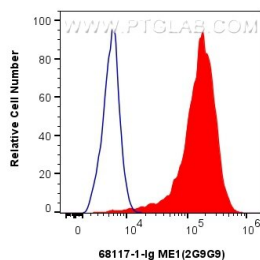
Storage:
Store at -20°C. Stable for one year after shipment.
Storage Buffer:
PBS with 0.02% sodium azide and 50% glycerol pH 7.3.
Aliquoting is unnecessary for -20°C storage

*** 20ul sizes contain 0.1% BSA

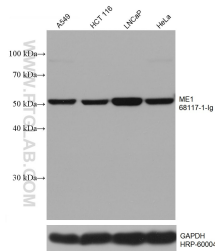
For technical support and original validation data for this product please contact:
T: 1 (888) 4PTGLAB (1-888-478-4522) (toll free in USA), or 1(312) 455-8498 (outside USA)
E: proteintech@ptglab.com
W: ptglab.com

This product is exclusively available under Proteintech Group brand and is not available to purchase from any other manufacturer.

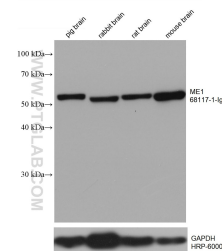
Selected Validation Data



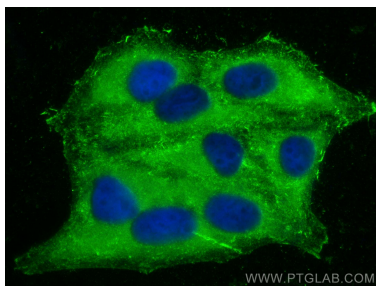
1x10⁶ HeLa cells were intracellularly stained with 0.8 μ g ME1 Monoclonal antibody (68117-1-Ig, Clone:2G9G9) and CoraLite®488-Conjugated Goat Anti-Mouse IgG(H+L) (SA00013-1)(red), or 0.8 μ g Mouse IgG2a isotype control Mouse McAb (66360-2-Ig, Clone: 11A1B2) (blue). Cells were fixed with 4% PFA and permeabilized with Flow Cytometry Perm Buffer (PF00011-C).



Various lysates were subjected to SDS PAGE followed by western blot with 68117-1-Ig (ME1 antibody) at dilution of 1:20000 incubated at room temperature for 1.5 hours. The membrane was stripped and reblotted with HRP-conjugated GAPDH Monoclonal antibody (HRP-60004) as loading control.



Various lysates were subjected to SDS PAGE followed by western blot with 68117-1-Ig (ME1 antibody) at dilution of 1:20000 incubated at room temperature for 1.5 hours. The membrane was stripped and reblotted with HRP-conjugated GAPDH Monoclonal antibody (HRP-60004) as loading control.



Immunofluorescent analysis of (-20°C Ethanol) fixed HepG2 cells using ME1 antibody (68117-1-Ig, Clone: 2G9G9) at dilution of 1:800 and CoraLite®488-Conjugated Goat Anti-Mouse IgG(H+L) (SA00013-1).