

For Research Use Only

# ME1 Monoclonal antibody, PBS Only

Catalog Number: 68117-1-PBS



## Basic Information

<b>Catalog Number:</b> 68117-1-PBS	<b>GenBank Accession Number:</b> BC025246	<b>Purification Method:</b> Protein A purification
<b>Size:</b> 100ug , Concentration: 1mg/ml by Nanodrop;	<b>GeneID (NCBI):</b> 4199	<b>CloneNo.:</b> 2G9G9
<b>Source:</b> Mouse	<b>UNIPROT ID:</b> P48163	
<b>Isotype:</b> IgG2a	<b>Full Name:</b> malic enzyme 1, NADP(+)-dependent, cytosolic	
<b>Immunogen Catalog Number:</b> AG9916	<b>Calculated MW:</b> 572 aa, 64 kDa	
	<b>Observed MW:</b> 55-64 kDa	

## Applications

**Tested Applications:**  
WB, Indirect ELISA

**Species Specificity:**  
Human, mouse, rat, rabbit, pig

## Background Information

ME1(NADP-dependent malic enzyme) belongs to the malic enzymes family. This malic enzyme catalyzes the reversible oxidative decarboxylation of malate and is a link between the glycolytic pathway and the citric acid cycle. The reaction is L-malate plus NADP(+) to form pyruvate, CO<sub>2</sub>, and NADPH.

## Storage

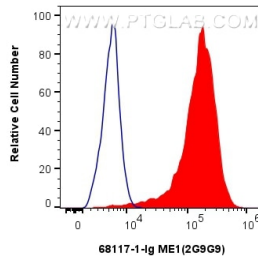
**Storage:**  
Store at -80°C.

**Storage Buffer:**  
PBS Only

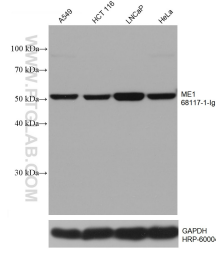
For technical support and original validation data for this product please contact:  
T: 1 (888) 4PTGLAB (1-888-478-4522) (toll free in USA), or 1(312) 455-8498 (outside USA)      E: proteintech@ptglab.com  
W: ptglab.com

**This product is exclusively available under Proteintech Group brand and is not available to purchase from any other manufacturer.**

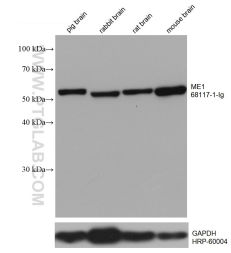
## Selected Validation Data



1x10<sup>6</sup> HeLa cells were intracellularly stained with 0.8 ug ME1 Monoclonal antibody (68117-1-Ig, Clone:2G9G9) and CoraLite®488-Conjugated AffiniPure Goat Anti-Mouse IgG(H+L) (SA00013-1)(red), or 0.8 ug Mouse IgG2a isotype control Mouse McAb (66360-2-Ig, Clone: 11A1B2) (blue). Cells were fixed with 4% PFA and permeabilized with Flow Cytometry Perm Buffer (PF00011-C). This data was developed using the same antibody clone with 68117-1-PBS in a different storage buffer



Various lysates were subjected to SDS PAGE followed by western blot with 68117-1-Ig (ME1 antibody) at dilution of 1:20000 incubated at room temperature for 1.5 hours. The membrane was stripped and reblotted with HRP-conjugated GAPDH Monoclonal antibody (HRP-60004) as loading control. This data was developed using the same antibody clone with 68117-1-PBS in a different storage buffer formulation.



Various lysates were subjected to SDS PAGE followed by western blot with 68117-1-Ig (ME1 antibody) at dilution of 1:20000 incubated at room temperature for 1.5 hours. The membrane was stripped and reblotted with HRP-conjugated GAPDH Monoclonal antibody (HRP-60004) as loading control. This data was developed using the same antibody clone with 68117-1-PBS in a different storage buffer formulation.