

For Research Use Only

# BNIP3L Monoclonal antibody

Catalog Number: 68118-1-Ig **3 Publications**



## Basic Information

|  |   |   |
|--|---|---|
| <b>Catalog Number:</b><br>68118-1-Ig                           | <b>GenBank Accession Number:</b><br>BC001559                              | <b>Purification Method:</b><br>Protein G purification   |
| <b>Size:</b><br>150ul , Concentration: 1000 ug/ml by Nanodrop; | <b>GeneID (NCBI):</b><br>665  | <b>CloneNo.:</b><br>1F6A3   |
| <b>Source:</b><br>Mouse  | <b>UNIPROT ID:</b><br>O60238  | <b>Recommended Dilutions:</b><br>WB 1:5000-1:50000<br>IHC 1:500-1:2000<br>IF/ICC 1:400-1:1600 |
| <b>Isotype:</b><br>IgG1  | <b>Full Name:</b><br>BCL2/adenovirus E1B 19kDa interacting protein 3-like |   |
| <b>Immunogen Catalog Number:</b><br>AG31547                    | <b>Calculated MW:</b><br>24 kDa   |   |
|  | <b>Observed MW:</b><br>35 kD  |   |

## Applications

|  |   |
|--|---|
| <b>Tested Applications:</b><br>WB, IHC, IF/ICC, ELISA  | <b>Positive Controls:</b><br><b>WB :</b> HEK-293 cells, LNCaP cells, HeLa cells, Jurkat cells, MOLT-4 cells, K-562 cells, Raji cells<br><b>IHC :</b> rat kidney tissue, human prostate cancer tissue, mouse brain tissue<br><b>IF/ICC :</b> HeLa cells, |
| <b>Cited Applications:</b><br>WB   |   |
| <b>Species Specificity:</b><br>human, mouse, rat   |   |
| <b>Cited Species:</b><br>human, monkey   |   |
| <b>Note-IHC: suggested antigen retrieval with TE buffer pH 9.0; (*) Alternatively, antigen retrieval may be performed with citrate buffer pH 6.0</b> |   |

## Background Information

BNIP3L/Nix is a mitochondrial protein from the outer membrane that belongs to the BH3-only protein from the BCL2 family. BNIP3L was initially recognized as a proapoptotic protein with milder efficacy in inducing apoptosis compared to other proteins in this family. These phenotypes raised concerns about the molecular function of BNIP3L besides inducing apoptosis. Moreover, studies have shown that BNIP3L is a 24-kDa protein, which is predominantly expressed as a 48-kDa dimer. When analyzed by SDS-PAGE, BNIP3 migrates predominantly as a about 60 kDa dimer in addition to the 30 kDa monomer. (PMID: 34930907, PMID: 32286918)

## Notable Publications

| Author         | Pubmed ID | Journal      | Application |
|----------------|-----------|--------------|-------------|
| Zhe Sun        | 39804926  | PLoS Pathog  | WB          |
| Wenbin Hua     | 39605029  | J Transl Med | WB          |
| Wen-Kang Zhang | 39189526  | Autophagy    | WB          |

## Storage

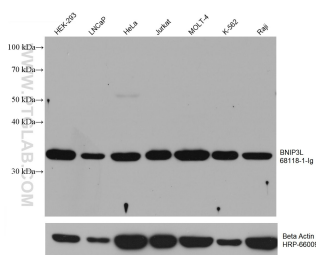
**Storage:**  
Store at -20°C. Stable for one year after shipment.  
**Storage Buffer:**  
PBS with 0.02% sodium azide and 50% glycerol, pH7.3  
**Aliquoting is unnecessary for -20°C storage**

\*\*\* 20ul sizes contain 0.1% BSA

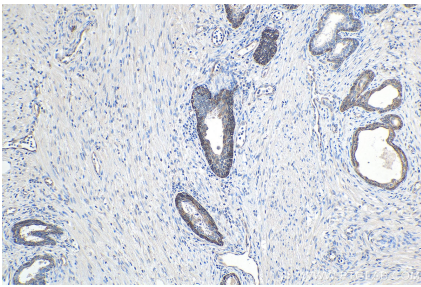
For technical support and original validation data for this product please contact:  
T: 1 (888) 4PTGLAB (1-888-478-4522) (toll free in USA), or 1(312) 455-8498 (outside USA)  
E: [proteintech@ptglab.com](mailto:proteintech@ptglab.com)  
W: [ptglab.com](http://ptglab.com)

This product is exclusively available under Proteintech Group brand and is not available to purchase from any other manufacturer.

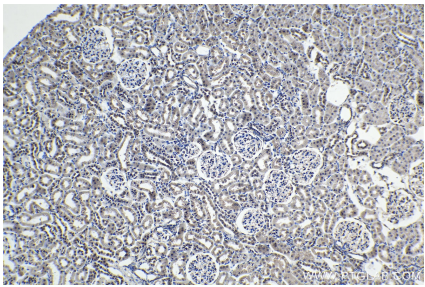
## Selected Validation Data



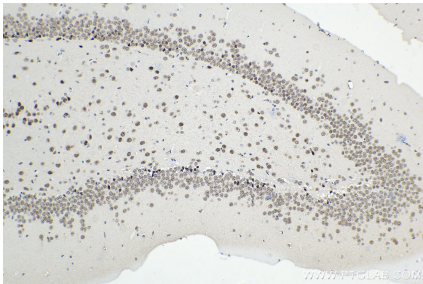
Various lysates were subjected to SDS PAGE followed by western blot with 68118-1-Ig (BNIP3L antibody) at dilution of 1:10000 incubated at room temperature for 1.5 hours. The membrane was stripped and reblotted with HRP-conjugated Beta Actin Monoclonal antibody (HRP-66009) as loading control.



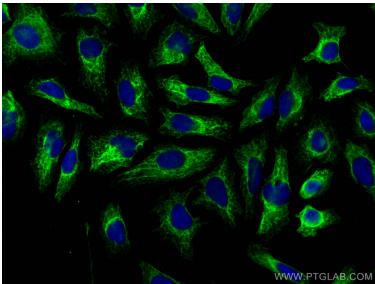
Immunohistochemical analysis of paraffin-embedded human prostate cancer tissue slide using 68118-1-Ig (BNIP3L antibody) at dilution of 1:1000 (under 10x lens). Proteolytic pre-treatment mediated antigen retrieval with Tris-EDTA buffer (pH 9.0).



Immunohistochemical analysis of paraffin-embedded rat kidney tissue slide using 68118-1-Ig (BNIP3L antibody) at dilution of 1:1000 (under 10x lens). Proteolytic pre-treatment mediated antigen retrieval with Tris-EDTA buffer (pH 9.0).



Immunohistochemical analysis of paraffin-embedded mouse brain tissue slide using 68118-1-Ig (BNIP3L antibody) at dilution of 1:1000 (under 10x lens). Heat mediated antigen retrieval with Tris-EDTA buffer (pH 9.0).



Immunofluorescent analysis of (-20°C Ethanol) fixed HeLa cells using BNIP3L antibody (68118-1-Ig, Clone: 1F6A3 ) at dilution of 1:800 and CoraLite® 488-Conjugated AffiniPure Goat Anti-Mouse IgG(H+L).