

For Research Use Only

REEP5 Monoclonal antibody

Catalog Number: 68119-1-Ig **Featured Product**



Basic Information

Catalog Number: 68119-1-Ig	GenBank Accession Number: BC065926	Purification Method: Protein A purification
Size: 150ul , Concentration: 1000 µg/ml by Nanodrop;	GeneID (NCBI): 7905	CloneNo.: 1H8D8
Source: Mouse	Full Name: receptor accessory protein 5	Recommended Dilutions: WB 1:20000-1:100000 IHC 1:5000-1:20000 IF 1:400-1:1600
Isotype: IgG1	Calculated MW: 21 kDa	
Immunogen Catalog Number: AG6229	Observed MW: 18 kDa	

Applications

Tested Applications:

IF, IHC, WB, ELISA

Species Specificity:

Human, pig

Note-IHC: suggested antigen retrieval with TE buffer pH 9.0; (*) Alternatively, antigen retrieval may be performed with citrate buffer pH 6.0

Positive Controls:

WB : HEK-293 cells, pig heart tissue, HeLa cells, LNCaP cells, Jurkat cells, MOLT-4 cells, K-562 cells

IHC : human colon cancer tissue,

IF : A549 cells,

Background Information

REEP5 (receptor expression-enhancing protein 5), also named as C5orf18, DP1 or TB2, is a membrane protein belonging to DP1/Yop1p protein family. All REEP proteins contain a conserved TB2/DP1, HVA22 domain which is involved in intracellular trafficking and secretion (PMID: 19123125). REEP5 is expressed in circumvallate papillae and testis, and may have the function to influence functional cell surface expression of taste receptors (PMID: 16720576). REEP5 can interact with atlastins (ATL1 and ATL2) which are involved in modulating the structure of ER network (PMID: 19665976).

Storage

Storage:

Store at -20°C. Stable for one year after shipment.

Storage Buffer:

PBS with 0.02% sodium azide and 50% glycerol pH 7.3.

Aliquoting is unnecessary for -20°C storage

***** 20ul sizes contain 0.1% BSA**

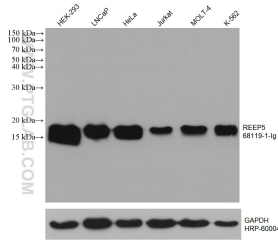
For technical support and original validation data for this product please contact:

T: 1 (888) 4PTGLAB (1-888-478-4522) (toll free in USA), or 1(312) 455-8498 (outside USA)

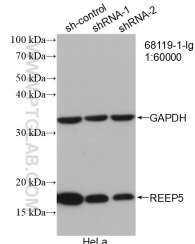
E: proteintech@ptglab.com
W: ptglab.com

This product is exclusively available under Proteintech Group brand and is not available to purchase from any other manufacturer.

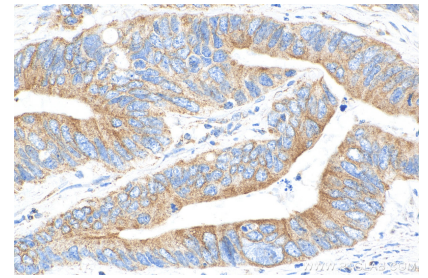
Selected Validation Data



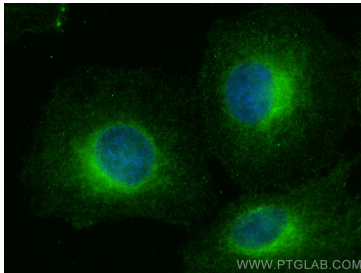
Various lysates were subjected to SDS PAGE followed by western blot with 68119-1-Ig (REEP5 antibody) at dilution of 1:100000 incubated at room temperature for 1.5 hours. The membrane was stripped and reblotted with HRP-conjugated GAPDH Monoclonal antibody (HRP-60004) as loading control.



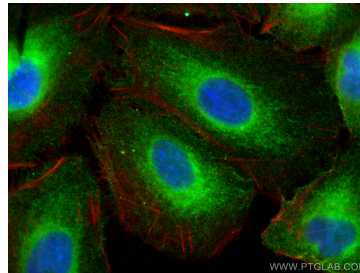
WB result of REEP5 antibody (68119-1-Ig; 1:60000; incubated at room temperature for 1.5 hours) with sh-Control and sh-REEP5 transfected HeLa cells.



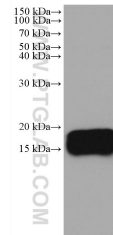
Immunohistochemical analysis of paraffin-embedded human colon cancer tissue slide using 68119-1-Ig (REEP5 antibody) at dilution of 1:10000 (under 10x lens). Heat mediated antigen retrieval with Tris-EDTA buffer (pH 9.0).



Immunofluorescent analysis of (4% PFA) fixed A549 cells using REEP5 antibody (68119-1-Ig, Clone: 1H8D8) at dilution of 1:800 and CoraLite@488-Conjugated AffiniPure Goat Anti-Mouse IgG(H+L).



Immunofluorescent analysis of (4% PFA) fixed A549 cells using REEP5 antibody (68119-1-Ig, Clone: 1H8D8) at dilution of 1:800 and CoraLite@488-Conjugated AffiniPure Goat Anti-Mouse IgG(H+L), CL594-phalloidin (red).



pig heart tissue were subjected to SDS PAGE followed by western blot with 68119-1-Ig (REEP5 antibody) at dilution of 1:100000 incubated at room temperature for 1.5 hours.