

For Research Use Only

# REEP5 Monoclonal antibody, PBS Only (Capture)

Catalog Number: 68119-1-PBS

Featured Product



## Basic Information

<b>Catalog Number:</b> 68119-1-PBS	<b>GenBank Accession Number:</b> BC065926	<b>Purification Method:</b> Protein A purification
<b>Size:</b> 100ug , Concentration: 1mg/ml by Nanodrop;	<b>GeneID (NCBI):</b> 7905	<b>CloneNo.:</b> 1H8D8
<b>Source:</b> Mouse	<b>UNIPROT ID:</b> Q00765	
<b>Isotype:</b> IgG1	<b>Full Name:</b> receptor accessory protein 5	
<b>Immunogen Catalog Number:</b> AG6229	<b>Calculated MW:</b> 21 kDa	
	<b>Observed MW:</b> 18 kDa	

## Applications

**Tested Applications:**  
WB, IHC, IF/ICC, Cytometric bead array, Indirect ELISA

**Species Specificity:**  
human, pig

## Product Information

68119-1-PBS targets REEP5 as part of a matched antibody pair:

MP50780-1: 68119-1-PBS capture and 68119-2-PBS detection (validated in Cytometric bead array)

Unconjugated mouse monoclonal antibody pair in PBS only (BSA and azide free) storage buffer at a concentration of 1 mg/mL, ready for conjugation.

This conjugation ready format makes antibodies ideal for use in many applications including: ELISAs, multiplex assays requiring matched pairs, mass cytometry, and multiplex imaging applications. Antibody use should be optimized by the end user for each application and assay.

## Background Information

REEP5 (receptor expression-enhancing protein 5), also named as C5orf18, DP1 or TB2, is a membrane protein belonging to DP1/Yop1p protein family. All REEP proteins contain a conserved TB2/DP1, HVA22 domain which is involved in intracellular trafficking and secretion (PMID: 19123125). REEP5 is expressed in circumvallate papillae and testis, and may have the function to influence functional cell surface expression of taste receptors (PMID: 16720576). REEP5 can interact with atlastins (ATL1 and ATL2) which are involved in modulating the structure of ER network (PMID: 19665976).

## Storage

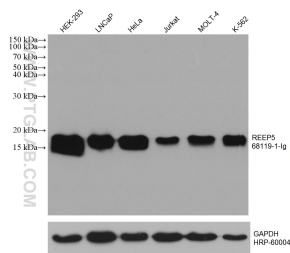
**Storage:**  
Store at -80°C.

**Storage Buffer:**  
PBS Only

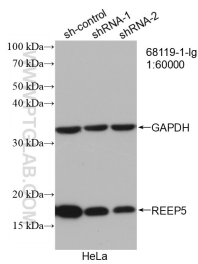
For technical support and original validation data for this product please contact:  
T: 1 (888) 4PTGLAB (1-888-478-4522) (toll free in USA), or 1(312) 455-8498 (outside USA)  
E: [proteintech@ptglab.com](mailto:proteintech@ptglab.com)  
W: [ptglab.com](http://ptglab.com)

This product is exclusively available under Proteintech Group brand and is not available to purchase from any other manufacturer.

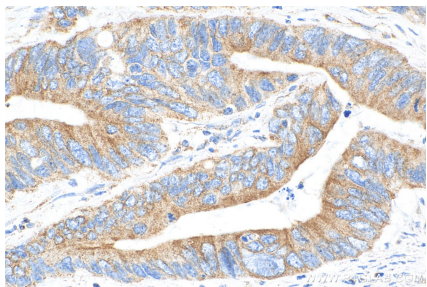
Selected Validation Data



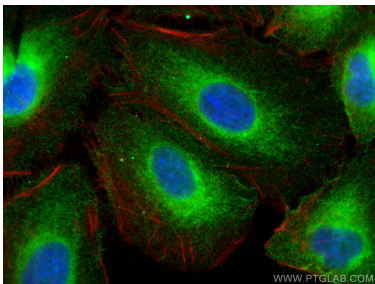
Various lysates were subjected to SDS PAGE followed by western blot with 68119-1-Ig (REEP5 antibody) at dilution of 1:100000 incubated at room temperature for 1.5 hours. The membrane was stripped and reblotted with HRP-conjugated GAPDH Monoclonal antibody (HRP-60004) as loading control. This data was developed using the same antibody clone with 68119-1-PBS in a different storage buffer formulation.



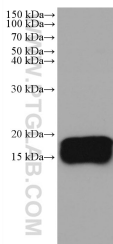
WB result of REEP5 antibody (68119-1-Ig; 1:60000; incubated at room temperature for 1.5 hours) with sh-Control and sh-REEP5 transfected HeLa cells. This data was developed using the same antibody clone with 68119-1-PBS in a different storage buffer formulation.



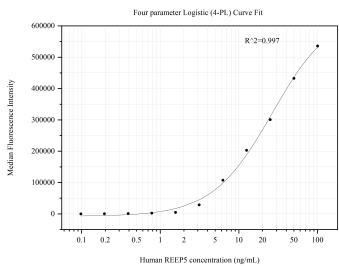
Immunohistochemical analysis of paraffin-embedded human colon cancer tissue slide using 68119-1-Ig (REEP5 antibody) at dilution of 1:10000 (under 10x lens). Heat mediated antigen retrieval with Tris-EDTA buffer (pH 9.0). This data was developed using the same antibody clone with 68119-1-PBS in a different storage buffer formulation.



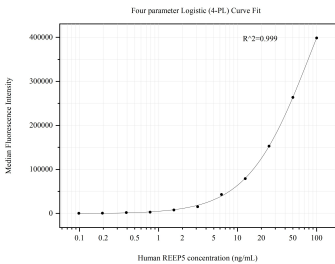
Immunofluorescent analysis of (4% PFA) fixed A549 cells using REEP5 antibody (68119-1-Ig, Clone: 1H8D8) at dilution of 1:800 and CoraLite®488-Conjugated AffiniPure Goat Anti-Mouse IgG(H+L), CL594-phalloidin (red). This data was developed using the same antibody clone with 68119-1-PBS in a different storage buffer formulation.



pig heart tissue were subjected to SDS PAGE followed by western blot with 68119-1-Ig (REEP5 antibody) at dilution of 1:100000 incubated at room temperature for 1.5 hours. This data was developed using the same antibody clone with 68119-1-PBS in a different storage buffer formulation.



Cytometric bead array standard curve of MP50780-1, REEP5 Monoclonal Matched Antibody Pair, PBS Only. Capture antibody: 68119-1-PBS. Detection antibody: 68119-2-PBS. Standard: Ag6229. Range: 0.098-100 ng/mL



Cytometric bead array standard curve of MP50780-2, REEP5 Monoclonal Matched Antibody Pair, PBS Only. Capture antibody: 68119-1-PBS. Detection antibody: 68119-3-PBS. Standard: null. Range: null.