

For Research Use Only

Dystrophin Monoclonal antibody

Catalog Number: 68120-1-Ig **2 Publications**



Basic Information

Catalog Number: 68120-1-Ig	GenBank Accession Number: BC028720	Purification Method: Protein A purification
Size: 150ul , Concentration: 1000 ug/ml by Nanodrop;	GeneID (NCBI): 1756	CloneNo.: 1G12E6
Source: Mouse	UNIPROT ID: P11532	Recommended Dilutions: WB 1:5000-1:50000 IHC 1:1000-1:4000 IF-P 1:200-1:800
Isotype: IgG2a	Full Name: dystrophin	
Immunogen Catalog Number: AG4392	Calculated MW: 3685 aa, 427 kDa	
	Observed MW: 70 kDa, 430 kDa	

Applications

Tested Applications: WB, IHC, IF-P, FC (Intra), ELISA	Positive Controls: WB : rat brain tissue, HeLa cells, rat heart tissue, HepG2 cells, mouse brain tissue IHC : rat skeletal muscle tissue, mouse skeletal muscle tissue IF-P : mouse skeletal muscle tissue, rat heart tissue FC (Intra) : HepG2 cells,
Cited Applications: WB, IHC, IF	
Species Specificity: human, mouse, rat	
Cited Species: human	
Note-IHC: suggested antigen retrieval with TE buffer pH 9.0; (*) Alternatively, antigen retrieval may be performed with citrate buffer pH 6.0	

Background Information

Dystrophin (DMD or BMD) is a large muscle protein whose mutations cause Duchenne muscular dystrophy (DMD) and Becker muscular dystrophy (BMD), the childhood neuromuscular disorders that result in progressive muscle weakness, respiratory difficulties and cardiovascular dysfunction. Dystrophin is a crucial component of the dystrophin-glycoprotein complex which is essential for muscle membrane integrity and stability. Dystrophin is located on the cytoplasmic face of the sarcolemma and connects the cytoskeletal network to the sarcolemma and extracellular matrix. Multiple isoforms of dystrophin exist due to the alternative splicing, with a wide range of MW (69-72, 110-143, 271, 426 kDa). Most tissues contain transcripts of several isoforms.

Notable Publications

Author	Pubmed ID	Journal	Application
Lara Falcucci	39939773	Nature	WB
Wen-Zhe Li	39649544	World J Gastroenterol	WB,IHC,IF

Storage

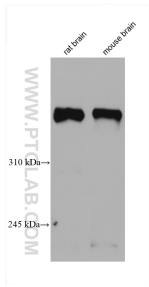
Storage:
Store at -20°C. Stable for one year after shipment.
Storage Buffer:
PBS with 0.02% sodium azide and 50% glycerol, pH7.3
Aliquoting is unnecessary for -20°C storage

*** 20ul sizes contain 0.1% BSA

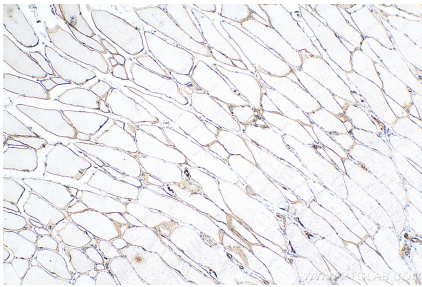
For technical support and original validation data for this product please contact:
T: 1 (888) 4PTGLAB (1-888-478-4522) (toll free in USA), or 1(312) 455-8498 (outside USA)
E: proteintech@ptglab.com
W: ptglab.com

This product is exclusively available under Proteintech Group brand and is not available to purchase from any other manufacturer.

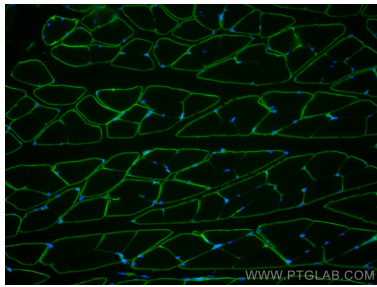
Selected Validation Data



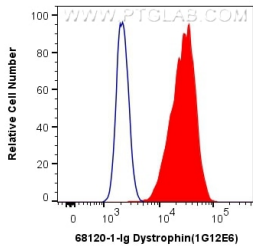
Various lysates were subjected to SDS PAGE followed by western blot with 68120-1-Ig (Dystrophin antibody) at dilution of 1:10000 incubated at room temperature for 1.5 hours.



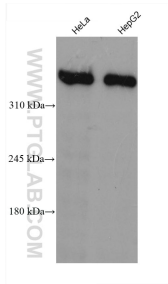
Immunohistochemical analysis of paraffin-embedded rat skeletal muscle tissue slide using 68120-1-Ig (Dystrophin antibody) at dilution of 1:2000 (under 10x lens). Heat mediated antigen retrieval with Tris-EDTA buffer (pH 9.0).



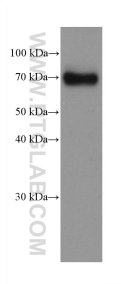
Immunofluorescent analysis of (4% PFA) fixed mouse skeletal muscle tissue using Dystrophin antibody (68120-1-Ig, Clone: 1G12E6) at dilution of 1:400 and CoraLite®488-Conjugated AffiniPure Goat Anti-Mouse IgG(H+L).



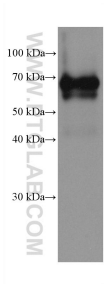
1X10⁶ HepG2 cells were intracellularly stained with 0.4 ug Anti-Human Dystrophin (68120-1-Ig, Clone:1G12E6) and CoraLite®488-Conjugated AffiniPure Goat Anti-Mouse IgG(H+L) at dilution 1:1000 (red), or 0.4 ug Mouse IgG2a Isotype Control (C1.18.4) (65208-1-Ig, Clone: C1.18.4) (blue). Cells were fixed with 4% PFA and permeabilized with Flow Cytometry Perm Buffer (PF00011-C).



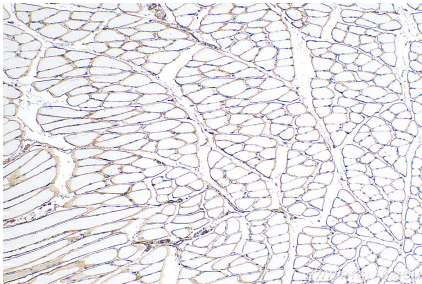
Various lysates were subjected to SDS PAGE followed by western blot with 68120-1-Ig (DMD antibody) at dilution of 1:10000 incubated at room temperature for 1.5 hours.



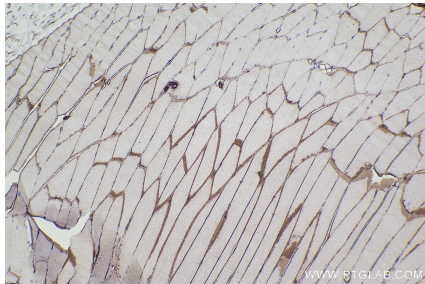
HeLa cells were subjected to SDS PAGE followed by western blot with 68120-1-Ig (Dystrophin antibody) at dilution of 1:10000 incubated at room temperature for 1.5 hours.



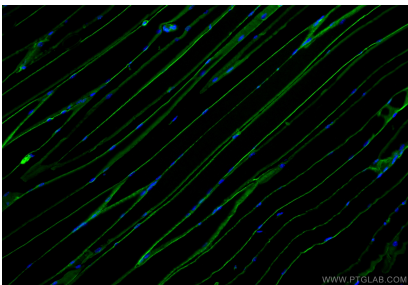
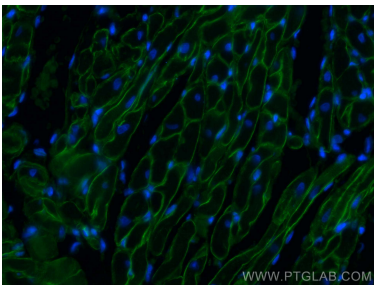
rat heart tissue were subjected to SDS PAGE followed by western blot with 68120-1-Ig (Dystrophin antibody) at dilution of 1:10000 incubated at room temperature for 1.5 hours.



Immunohistochemical analysis of paraffin-embedded mouse skeletal muscle tissue slide using 68120-1-Ig (Dystrophin antibody) at dilution of 1:2000 (under 10x lens). Heat mediated antigen retrieval with Tris-EDTA buffer (pH 9.0).



Immunohistochemical analysis of paraffin-embedded mouse skeletal muscle tissue slide using 68120-1-Ig (Dystrophin antibody) at dilution of 1:2000 (under 10x lens). Heat mediated antigen retrieval with Tris-EDTA buffer (pH 9.0).



Immunofluorescent analysis of (4% PFA) fixed rat heart tissue using Dystrophin antibody (68120-1-Ig, Clone: 1G12E6) at dilution of 1:400 and CoraLite®488-Conjugated AffiniPure Goat Anti-Mouse IgG(H+L).

Immunofluorescent analysis of (4% PFA) fixed paraffin-embedded mouse skeletal muscle tissue using Dystrophin antibody (68120-1-Ig, Clone: 1G12E6) at dilution of 1:400 and CoraLite®488-Conjugated Goat Anti-Mouse IgG(H+L) (SA00013-1). Heat mediated antigen retrieval with Tris-EDTA buffer (pH 9.0).