

For Research Use Only

Dystrophin Monoclonal antibody, PBS Only

Catalog Number: 68120-1-PBS



Basic Information

Catalog Number: 68120-1-PBS	GenBank Accession Number: BC028720	Purification Method: Protein A purification
Size: 100ug , Concentration: 1mg/ml by Nanodrop;	GeneID (NCBI): 1756	CloneNo.: 1G12E6
Source: Mouse	UNIPROT ID: P11532	
Isotype: IgG2a	Full Name: dystrophin	
Immunogen Catalog Number: AG4392	Calculated MW: 3685 aa, 427 kDa	
	Observed MW: 70 kDa, 430 kDa	

Applications

Tested Applications:
WB, IHC, IF-P, FC (Intra), Indirect ELISA

Species Specificity:
human, mouse, rat

Background Information

Dystrophin (DMD or BMD) is a large muscle protein whose mutations cause Duchenne muscular dystrophy (DMD) and Becker muscular dystrophy (BMD), the childhood neuromuscular disorders that result in progressive muscle weakness, respiratory difficulties and cardiovascular dysfunction. Dystrophin is a crucial component of the dystrophin-glycoprotein complex which is essential for muscle membrane integrity and stability. Dystrophin is located on the cytoplasmic face of the sarcolemma and connects the cytoskeletal network to the sarcolemma and extracellular matrix. Multiple isoforms of dystrophin exist due to the alternative splicing, with a wide range of MW (69-72, 110-143, 271, 426 kDa). Most tissues contain transcripts of several isoforms.

Storage

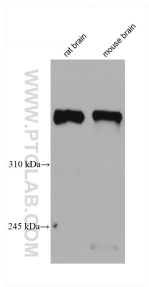
Storage:
Store at -80°C.

Storage Buffer:
PBS Only

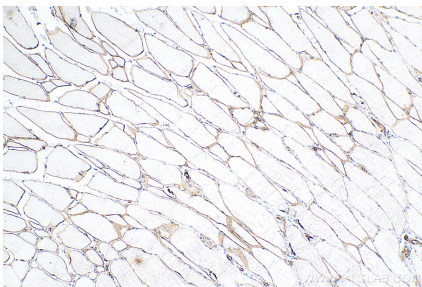
For technical support and original validation data for this product please contact:
T: 1 (888) 4PTGLAB (1-888-478-4522) (toll free in USA), or 1(312) 455-8498 (outside USA)
E: proteintech@ptglab.com
W: ptglab.com

This product is exclusively available under Proteintech Group brand and is not available to purchase from any other manufacturer.

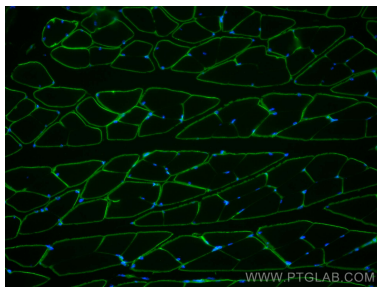
Selected Validation Data



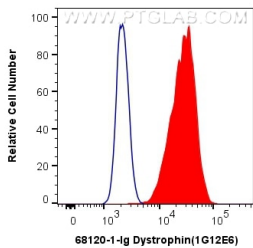
Various lysates were subjected to SDS PAGE followed by western blot with 68120-1-Ig (Dystrophin antibody) at dilution of 1:10000 incubated at room temperature for 1.5 hours. This data was developed using the same antibody clone with 68120-1-PBS in a different storage buffer formulation.



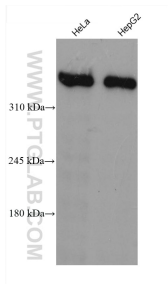
Immunohistochemical analysis of paraffin-embedded rat skeletal muscle tissue slide using 68120-1-Ig (Dystrophin antibody) at dilution of 1:2000 (under 10x lens). Heat mediated antigen retrieval with Tris-EDTA buffer (pH 9.0). This data was developed using the same antibody clone with 68120-1-PBS in a different storage buffer formulation.



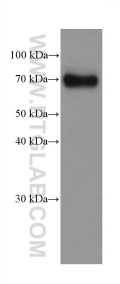
Immunofluorescent analysis of (4% PFA) fixed mouse skeletal muscle tissue using Dystrophin antibody (68120-1-Ig, Clone: 1G12E6) at dilution of 1:400 and CoraLite®488-Conjugated AffiniPure Goat Anti-Mouse IgG(H+L). This data was developed using the same antibody clone with 68120-1-PBS in a different storage buffer formulation.



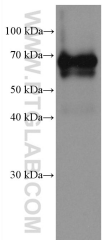
1X10⁶ HepG2 cells were intracellularly stained with 0.4 ug Anti-Human Dystrophin (68120-1-Ig, Clone:1G12E6) and CoraLite®488-Conjugated AffiniPure Goat Anti-Mouse IgG(H+L) at dilution 1:1000 (red), or 0.4 ug Mouse IgG2a Isotype Control (C1.18.4) (65208-1-Ig, Clone: C1.18.4) (blue). Cells were fixed with 4% PFA and permeabilized with Flow Cytometry Perm Buffer (PF00011-C). This data was developed using the same antibody clone with 68120-1-



Various lysates were subjected to SDS PAGE followed by western blot with 68120-1-Ig (DMD antibody) at dilution of 1:10000 incubated at room temperature for 1.5 hours. This data was developed using the same antibody clone with 68120-1-PBS in a different storage buffer formulation.



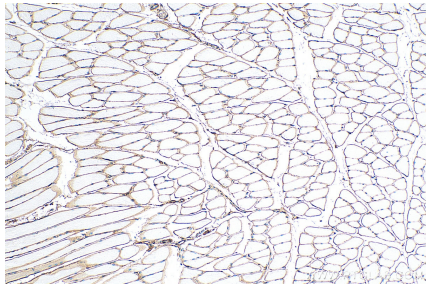
HeLa cells were subjected to SDS PAGE followed by western blot with 68120-1-Ig (Dystrophin antibody) at dilution of 1:10000 incubated at room temperature for 1.5 hours. This data was developed using the same antibody clone with 68120-1-PBS in a different storage buffer formulation.



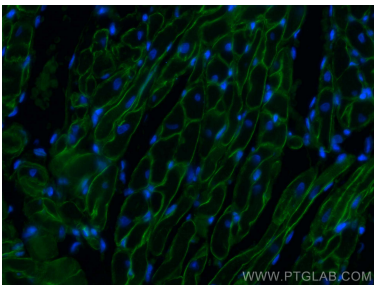
rat heart tissue were subjected to SDS PAGE followed by western blot with 68120-1-Ig (Dystrophin antibody) at dilution of 1:10000 incubated at room temperature for 1.5 hours. This data was developed using the same antibody clone with 68120-1-PBS in a different storage buffer formulation.



Immunohistochemical analysis of paraffin-embedded mouse skeletal muscle tissue slide using 68120-1-Ig (Dystrophin antibody) at dilution of 1:2000 (under 10x lens). Heat mediated antigen retrieval with Tris-EDTA buffer (pH 9.0). This data was developed using the same antibody clone with 68120-1-PBS in a different storage buffer formulation.



Immunohistochemical analysis of paraffin-embedded mouse skeletal muscle tissue slide using 68120-1-Ig (Dystrophin antibody) at dilution of 1:2000 (under 10x lens). Heat mediated antigen retrieval with Tris-EDTA buffer (pH 9.0). This data was developed using the same antibody clone with 68120-1-PBS in a different storage buffer formulation.



Immunofluorescent analysis of (4% PFA) fixed rat heart tissue using Dystrophin antibody (68120-1-Ig, Clone: 1G12E6) at dilution of 1:400 and CoraLite®488-Conjugated AffiniPure Goat Anti-Mouse IgG(H+L). This data was developed using the same antibody clone with 68120-1-PBS in a different storage buffer formulation.