

For Research Use Only

# MAN1B1 Monoclonal antibody

Catalog Number: 68121-1-Ig



## Basic Information

<b>Catalog Number:</b> 68121-1-Ig	<b>GenBank Accession Number:</b> BC002953	<b>Purification Method:</b> Protein A purification
<b>Size:</b> 150ul , Concentration: 1000 µg/ml by Nanodrop;	<b>GeneID (NCBI):</b> 11253	<b>CloneNo.:</b> 3C9F10
<b>Source:</b> Mouse	<b>Full Name:</b> mannosidase, alpha, class 1B, member 1	<b>Recommended Dilutions:</b> WB 1:1000-1:6000
<b>Isotype:</b> IgG2b	<b>Calculated MW:</b> 80 kDa	
<b>Immunogen Catalog Number:</b> AG28302	<b>Observed MW:</b> 80 kDa	

## Applications

<b>Tested Applications:</b> WB, ELISA	<b>Positive Controls:</b> WB : HeLa cells, MCF-7 cells, HEK-293 cells, LNCaP cells, HaCaT cells, U-87 MG cells, HepG2 cells
<b>Species Specificity:</b> Human	

## Background Information

MAN1B1, also known as ERMAN1, MANA-ER, belongs to the glycosyl hydrolase 47 family. MAN1B1 is involved in glycoprotein quality control targeting of misfolded glycoproteins for degradation, specifically converting Man9GlcNAc to Man8GlcNAc isomer B. At high enzyme concentrations, it further trims the carbohydrates to Man5-6GlcNAc2 (PMID: 18003979). Mutations in MAN1B1 cause autosomal-recessive intellectual disability. This gene has been associated with Rafiq syndrome (PMID: 21763484).

## Storage

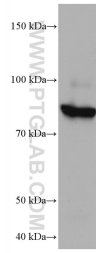
**Storage:**  
Store at -20°C. Stable for one year after shipment.  
**Storage Buffer:**  
PBS with 0.02% sodium azide and 50% glycerol pH 7.3.  
Aliquoting is unnecessary for -20°C storage

\*\*\* 20ul sizes contain 0.1% BSA

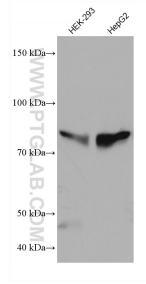
For technical support and original validation data for this product please contact:  
T: 1 (888) 4PTGLAB (1-888-478-4522) (toll free in USA), or 1(312) 455-8498 (outside USA)  
E: proteintech@ptglab.com  
W: ptglab.com

This product is exclusively available under Proteintech Group brand and is not available to purchase from any other manufacturer.

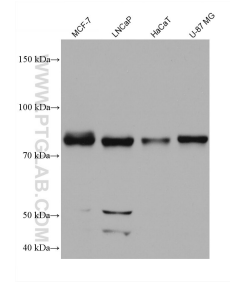
## Selected Validation Data



HeLa cells were subjected to SDS PAGE followed by western blot with 68121-1-Ig (MAN1B1 antibody) at dilution of 1:3000 incubated at room temperature for 1.5 hours.



Various lysates were subjected to SDS PAGE followed by western blot with 68121-1-Ig (MAN1B1 antibody) at dilution of 1:3000 incubated at room temperature for 1.5 hours.



Various lysates were subjected to SDS PAGE followed by western blot with 68121-1-Ig (MAN1B1 antibody) at dilution of 1:3000 incubated at room temperature for 1.5 hours.