

For Research Use Only

MAN1B1 Monoclonal antibody

Catalog Number: 68121-1-Ig



Basic Information

Catalog Number: 68121-1-Ig	GenBank Accession Number: BC002953	Purification Method: Protein A purification
Size: 150ul , Concentration: 1000 ug/ml by Nanodrop;	GeneID (NCBI): 11253	CloneNo.: 3C9F10
Source: Mouse	UNIPROT ID: Q9UKM7	Recommended Dilutions: WB 1:1000-1:6000 IF/ICC 1:400-1:1600
Isotype: IgG2b	Full Name: mannosidase, alpha, class 1B, member 1	
Immunogen Catalog Number: AG28302	Calculated MW: 80 kDa	
	Observed MW: 80 kDa	

Applications

Tested Applications: WB, IF/ICC, ELISA	Positive Controls:
Species Specificity: Human	WB : HeLa cells, MCF-7 cells, HEK-293 cells, LNCaP cells, HaCaT cells, U-87 MG cells, HepG2 cells IF/ICC : U2OS cells,

Background Information

MAN1B1, also known as ERMAN1, MANA-ER, belongs to the glycosyl hydrolase 47 family. MAN1B1 is involved in glycoprotein quality control targeting of misfolded glycoproteins for degradation, specifically converting Man9GlcNAc to Man8GlcNAc isomer B. At high enzyme concentrations, it further trims the carbohydrates to Man5-6GlcNAc2 (PMID: 18003979). Mutations in MAN1B1 cause autosomal-recessive intellectual disability. This gene has been associated with Rafiq syndrome (PMID: 21763484).

Storage

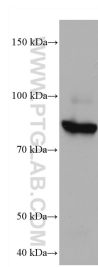
Storage:
Store at -20°C. Stable for one year after shipment.
Storage Buffer:
PBS with 0.02% sodium azide and 50% glycerol pH 7.3.
Aliquoting is unnecessary for -20°C storage

*** 20ul sizes contain 0.1% BSA

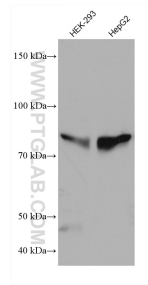
For technical support and original validation data for this product please contact:
T: 1 (888) 4PTGLAB (1-888-478-4522) (toll free in USA), or 1(312) 455-8498 (outside USA)
E: proteintech@ptglab.com
W: ptglab.com

This product is exclusively available under Proteintech Group brand and is not available to purchase from any other manufacturer.

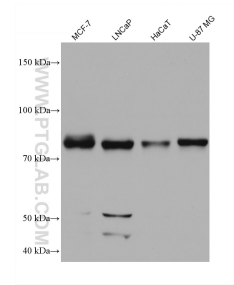
Selected Validation Data



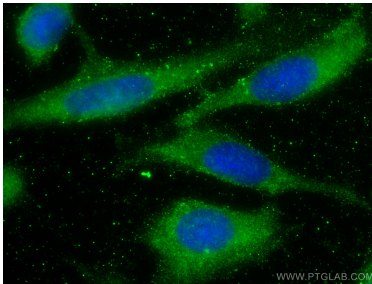
HeLa cells were subjected to SDS PAGE followed by western blot with 68121-1-Ig (MAN1B1 antibody) at dilution of 1:3000 incubated at room temperature for 1.5 hours.



Various lysates were subjected to SDS PAGE followed by western blot with 68121-1-Ig (MAN1B1 antibody) at dilution of 1:3000 incubated at room temperature for 1.5 hours.



Various lysates were subjected to SDS PAGE followed by western blot with 68121-1-Ig (MAN1B1 antibody) at dilution of 1:3000 incubated at room temperature for 1.5 hours.



Immunofluorescent analysis of (-20°C Ethanol) fixed U2OS cells using MAN1B1 antibody (68121-1-Ig, Clone: 3C9F10) at dilution of 1:800 and CoraLite®488-Conjugated Goat Anti-Mouse IgG(H+L).